



# 3510

**3510 SERIES  
FIFTH WHEELS**



## **3510 Series Fifth Wheel Technology**

**FW3510**

**FW3410**

**FW3310**

**FW3110**





## Advanced Technology Delivers Superior Performance

Holland fifth wheels have earned a reputation for exceptional durability, driver productivity, and reliability that continues to “raise the bar” on fifth wheel performance standards, while lowering your total cost of ownership.

### *Evolutionary Designs*

The Holland 3510 model fifth wheel has been the foundation for evolutionary new ideas that expand fifth wheel function and value. For example, Holland’s 3110 NoLube model eliminates all fifth wheel lubrication requirements. This advancement means that drivers no longer get dirty from greasy fifth wheels, nor do they spend time greasing top plates or locks. In addition, workshop managers can improve the work environment for mechanics and reduce the potential for costly injuries from slips and falls on greasy floors. And, fleets can protect the environment from excess grease on the road and in our water supply.

Other Holland innovations on the 3510 Series include an Electronic Lock Indicator (ELI) that insures a secure coupling between tractor and trailer.

### *Guaranteed Performance*

Holland has raised the bar on supplier accountability. We offer the industries’ first Performance Guarantee. Holland warrants not only the material and workmanship of the 3510 Series fifth wheels, but we also guarantee the durability as well. Please see the 3510 Series Fifth Wheel Warranty statement for further information.

Our innovative fifth wheel technology is the best in the world. Holland fifth wheels offer proven value and performance in addition to exceptional operating and economic advantages.

# 3510 SER

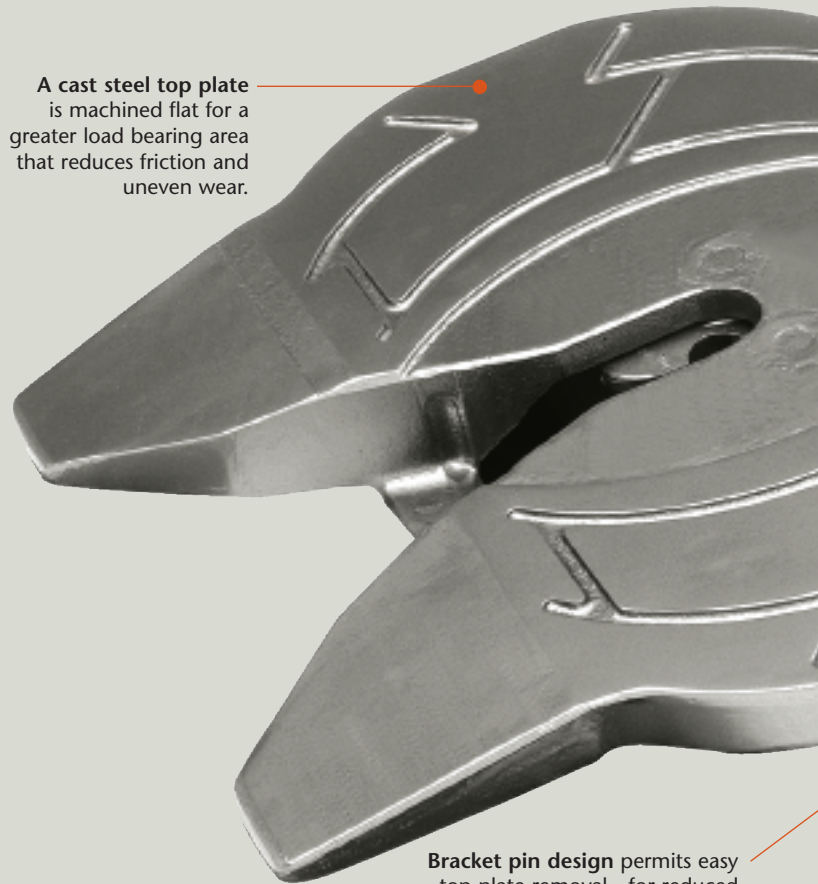
### Capacity:

- 65,000 kg Gross Combination Weight
- 20,000 kg Vertical Load
- 150 kN D-Value
- Top Plate Weight = 108 kg
- EC type approval number e1\*94/20\*0812

### Warranty:

- 6 years or 1,000,000 km Performance Guarantee  
*See FW3510/FW3410 European Commercial Fifth Wheel Warranty for details.*

A cast steel top plate is machined flat for a greater load bearing area that reduces friction and uneven wear.



Bracket pin design permits easy top plate removal—for reduced maintenance cost and time.



Proper Couple



Improper Couple

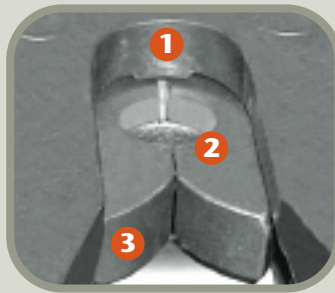


#### **The Holland Electronic Lock Indicator System (ELI™)**

A technology that expands the function of a fifth wheel. Now drivers can effectively manage the coupling process from inside the cab as a “back up” to visual inspection and pull test locking procedures. In addition, it can reduce the potential for improper locking, component damage and downtime. A data collection function is now integrated as well.

# IES TECHNOLOGY

*Precision machined top plate  
and lock mechanism fit-up  
maximizes surface contact  
area and extends service life.*



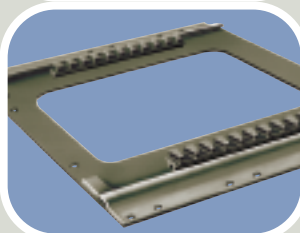
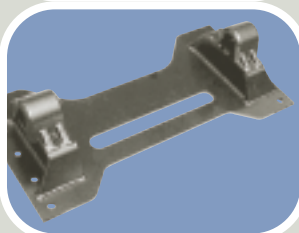
## BEST BY DESIGN® LOCKING SYSTEM INSURES UPTIME.

- 1 High Coupling Protection.**  
Lock system protects against coupling at an improper height.
- 2 Greater Kingpin-to-Lock Contact Area.** Lock contact area is 46 cm<sup>2</sup>—up to 87% greater contact area, over competitive models, for longer kingpin and lock life.
- 3 Forged/Cast Steel Locks.**  
Rear lock is forged, hardened and machined steel. Front lock is machined, hardened cast steel.

Visible Lock Indicator  
Infinite lock adjustment  
positions improve lock  
and kingpin durability.



The ergonomic release handle  
fully complies with the  
interlocking requirements of EC  
94/20 and features Holland's  
easy-to-pull, one-hand  
operation "trigger lock".



Available with the new lightweight bracket system, conventional ISO/DIN mounting brackets, weightsaver mount or sliding mounts.

## FW3110

### **NoLube** Fifth Wheel

Lock system components are protected with a low friction coating which provides long wear life and superior corrosion protection.



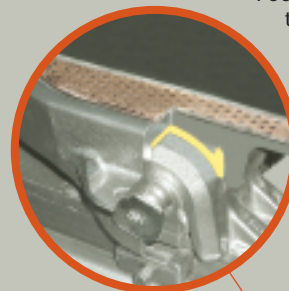
Patented surface alloy on the kingpin contact surfaces of the lock jaws provides lubrication-free operation along with corrosion and wear resistance, eliminating the need to grease the locks.

## FW3410/FW3310

### **LowLube™** Fifth Wheel

The long life replacement lube plate inserts provide friction-free performance. The lube plates fit into cast recesses of the top plate and are secured by locknuts.

Pocket inserts fit between the top plate and brackets to provide long lasting top plate articulation without lubrication.



Accessible grease fitting and lube tube permits easy lock lubrications.





# ACCOUNTABILITY

## Accountability. The Distinctive Holland Advantage.

Accountability is the greatest value a manufacturer can offer its customers. At Holland, it's a strategy that accepts the responsibility to consistently and continually deliver quantifiable value—before, during and after a purchase. To keep our promises, and honour our commitments, without excuses or surprises.

You can expect Holland to be fully accountable for the performance, durability and reliability of every Holland 3510 Series fifth wheel.

That includes:

- A 5 year, 500,000 mile warranty on material and workmanship.
- A 6 year, 600,000 mile *Performance Guarantee* that guarantees the durability of the 3510 Series fifth wheel.

*Accountability. It's what defines Holland "value."*

*Value that will be visible on your bottom line.*



The Holland Group, Inc.  
Holland, MI 49423  
United States  
Phone: (616) 396-6501  
Fax: (616) 396-1511



Holland Europe GmbH  
Altenkamp 9  
D-33758  
Schloss Holte-Stukenbrock  
Germany  
Phone: +49 (0) 5207-89560  
Fax: +49 (0) 5207-895656

Holland Eurohitch Ltd.  
Hoo Farm Industrial Estate  
Worcester Road  
Kidderminster  
Worcestershire DY11 7RA  
United Kingdom  
Phone: +44 (0)1562-732010  
Fax: +44 (0)1562-732020

Holland Hitch (Aust.) Pty. Ltd.  
Melton, Victoria, Australia  
Phone: 61-(0)3-9743-6799  
Fax: 61-(0)3-9747-9617

Holland Transtrade  
(Thailand) Company, Ltd.  
Bangkok, Thailand  
Phone: 66 (0)2-513-8758  
Fax: 66 (0)2-513-8757

Nippon Holland, Ltd.  
Tokyo, Japan  
Phone: 81-(0)3-3461-9130  
Fax: 81-(0)3-3463-1407

Holland Transtrade  
Far East SDN BHD  
Shah Alam, Malaysia  
Phone: 60 (0)3 734-2888  
Fax: 60 (0)3 736-5588