







# Ganci di Traino Drawbar couplings - Anhängekupplungen - Crochets d'attelage

## GANCI A PERNO - PIN DRAWBAR COUPLINGS - ANHÄNGEKUPPLUNGEN - CROCHETS D'ATTELAGE




serie series Serie série	omologazione homologation Genehmigung omologation	descrizione description Beschreibung description	per occhioni for drawbar eyes für Zugösen pour anneaux			pagina page Seite page
 <b>E 50</b>	94/20/CE	Ganci di traino automatici rigidi Automatic drawbar couplings Vollautomatische Anhängekupplungen Crochets d'attelage automatiques rigides	Ø 50 mm	✓	✓	6
 <b>EH 50</b>	94/20/CE	Ganci di traino automatici campana snodata Automatic drawbar couplings Vollautomatische Anhängekupplungen mit Vertikalgelenk Crochets d'attelage automatiques	Ø 50 mm	✓		8
 <b>MCX 50</b>	94/20/CE	Ganci di traino automatici modulari Automatic modular drawbar couplings Vollautomatische Modul Anhängekupplungen Crochets d'attelage automatiques modulaires	Ø 50 mm	✓		10
 <b>E 40</b>	94/20/CE	Ganci di traino automatici rigidi Automatic drawbar couplings Vollautomatische Anhängekupplungen Crochets d'attelage automatiques rigides	Ø 40 mm	✓	✓	12
 <b>EH 45</b>	94/20/CE	Ganci di traino automatici campana snodata Automatic drawbar couplings Vollautomatische Anhängekupplungen mit Vertikalgelenk Crochets d'attelage automatiques	Ø 45 mm	✓		14
 <b>NUOVO LUPO</b>	CUNA NC 138 - 55	Ganci di traino manuali campana snodata Manual drawbar couplings Vollautomatische Anhängekupplungen Crochets d'attelage manuels	Ø 45 mm	✓		16
 <b>GX 57</b>	94/20/CE	Ganci di traino automatici rigidi Automatic drawbar couplings Vollautomatische Anhängekupplungen Crochets d'attelage automatiques rigides	Ø 57,5 mm	✓	✓	18
 <b>GA 38</b>	94/20/CE	Ganci di traino automatici per veicoli leggeri Automatic couplings Vollautomatische Anhängekupplungen Crochets d'attelage automatiques pour véhicules légers	Ø 40 mm	✓	✓	20
 <b>GA 25</b>	94/20/CE	Ganci di traino automatici per veicoli leggeri Automatic couplings Vollautomatische Anhängekupplungen Crochets d'attelage automatiques pour véhicules légers	Ø 40 mm Ø 35 T Ø 45 T swiss	✓	✓	22

# Ganci di Traino Drawbar couplings - Anhängerkupplungen - Crochets d'attelage




## GANCI A SFERA - BALL HITCHES - KUPPLUNGSKUGELN - ROTULES

serie series Serie serie	omologazione homologation Genehmigung omologation	descrizione description Beschreibung description	per occhielli for drawbar eyes für Zugösen pour anneaux			pagina page Seite page
<b>DE 700-701</b> 	94/20/CE	Ganci a sfera ISO50 per veicoli leggeri Ball hitches ISO50 for light vehicles Kugelkopfkupplungen Rotules fixes	B 50 Ø 76 T	✓	✓	24
<b>DE 702</b> 	94/20/CE	Ganci a sfera ISO50 per veicoli leggeri Ball hitches ISO50 for light vehicles Kugelkopfkupplungen Rotules fixes	B 50 Ø 50 mm Ø 40 mm Ø 76 T	✓	✓	24
<b>DE 703</b> 	94/20/CE	Ganci a sfera ISO50 per veicoli leggeri Ball hitches ISO50 for light vehicles Kugelkopfkupplungen Rotules fixes	B 50	✓	✓	25
<b>DEDALO</b> 	94/20/CE	Ganci a sfera ISO50 per veicoli leggeri Ball hitches ISO50 for light vehicles Kugelkopfkupplungen Rotules fixes	B 50	✓	✓	25

## GANCI AD UNCINO - PINTLE HOOKS - HAKENKUPPLUNGEN - CROCHETS FIXES

<b>UN 76</b> 	ECE R 55	Ganci ad uncino Hook couplings Hakenkupplungen Crochets d'attelage	Ø 76 T	✓	✓	26
<b>UN 45</b> 	94/20/CE	Ganci ad uncino per veicoli leggeri Hook couplings for light vehicles Hakenkupplungen Crochets fixes	Ø 45 T Ø 76 T	✓	✓	28
<b>ULPYO</b> 	CUNA NC 138 - 40	Ganci ad uncino per veicoli leggeri Hook couplings for light vehicles Hakenkupplungen Crochets fixes	Ø 45 T Ø 76 T	✓	✓	29

## GANCI SPECIALI - SPECIAL DRAWBAR COUPLINGS - SPEZIALANHÄNGEKUPPLUNGEN - CROCHETS SPÉCIAUX

<b>GS 900</b> 	94/20/CE	Gancio trasporto vetture Car transporter drawbar coupling Autotransporterkupplung Crochet d'attelage pour transport véhicules			✓	30
<b>TITANO</b> 	CUNA NC 138 - 40	Ganci per traini eccezionali Drawbar couplings for heavy duty Schwerlastanhängerkupplung Crochets d'attelage pour transport lourd	Ø 50 mm	✓		32
<b>GM 10</b> 		Ganci di manovra Towing couplings Abschleppkupplung Attelages de dépannage	Ø 50 mm Ø 40 mm Ø 76 T	✓		33



# E 50

Ganci automatici  
Automatic couplings  
Vollautomatische Anhängerkupplungen  
Crochets automatiques

Per occhielli - For drawbar eyes  
Für Zugösen - Pour anneaux

Ø  
**50**

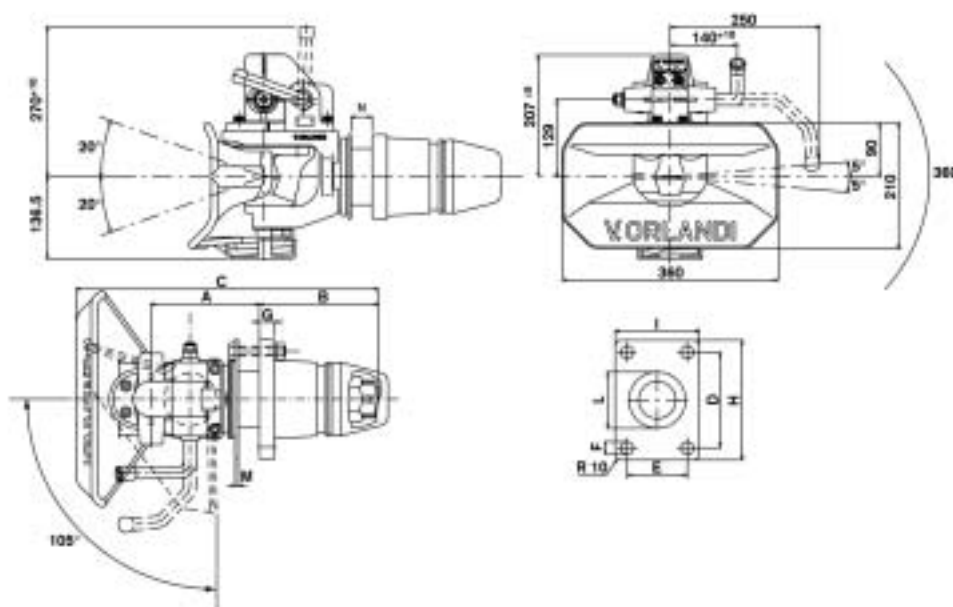
94 / 20 / CE

## Dati tecnici - Technical data - Technische Daten - Données techniques

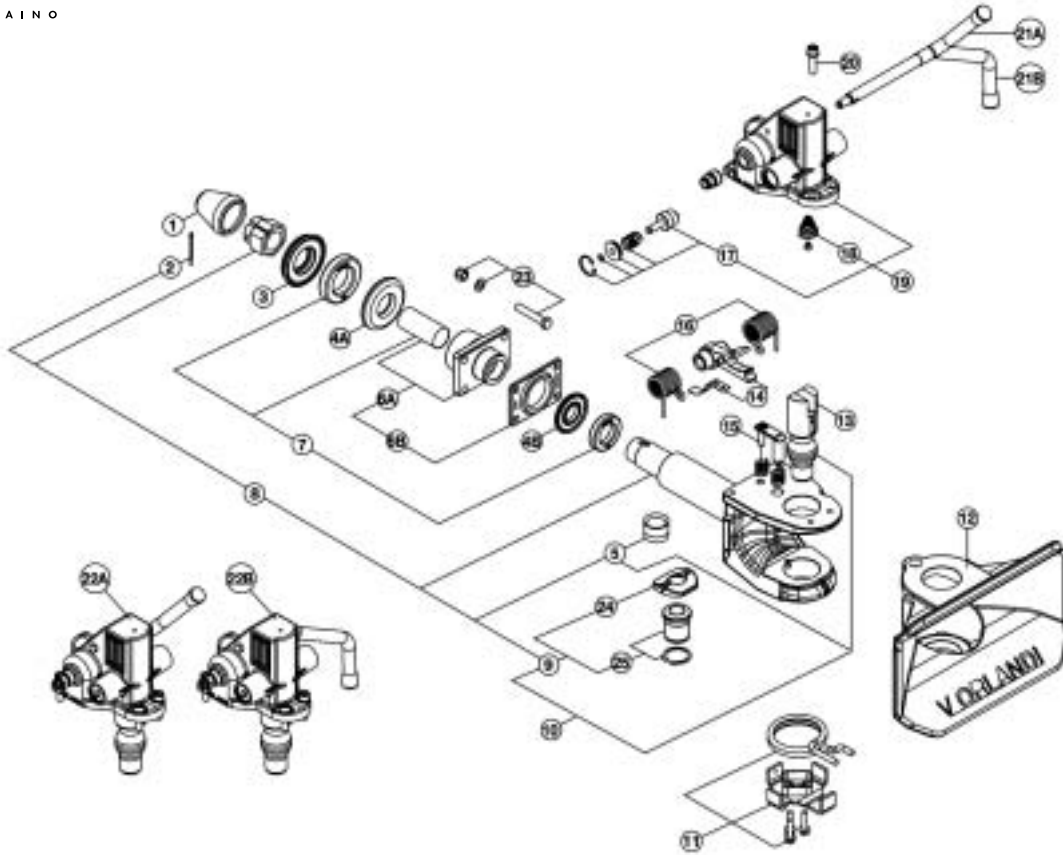
Tipo Type Typ Type	Codice Article number Artikelnummer Numéro d'ordre	Flangia Hole pattern Lochbild Entr'axe mm	Valore D D-Value D-Wert Valeur D kN	Valore Dc Dc-Value Dc-Wert Valeur Dc kN	Massa S S-Load S-Last Masse S kg	Valore V V-Value V-Wert Valeur V kN	Peso Weight Gewicht Poids kg	94 / 20 / CE	
								Classe Class Klasse Classe	Omologazione Homologation Genehmigung Homologation
E 503	GE503A0 GE503B0	120x55	70	50	650	18	34	C50-3	e11 00-0308
E 504	GE504A0 GE504B0	140x80	100	70	900	25	35.5	C50-4	e11 00-0310
E 505	GE505A0 GE505B0	160x100	130	83	1000	29	37.5	C50-X	e11 00-0309
E 506	GE506A0 GE506B0	160x100	190	120	1000	50	43.5	C50-6	e11 00-0311
E 509	GE509A0 GE509B0	160x100	200	135	1000	75	47.5	C50-X	e11 00-1046
					2500	50			
E 510	GE510A0 GE510B0	160x100	280	140	1000	90	49	C50-X	e11 00-4638

### Versione - Version - Ausführung - Version

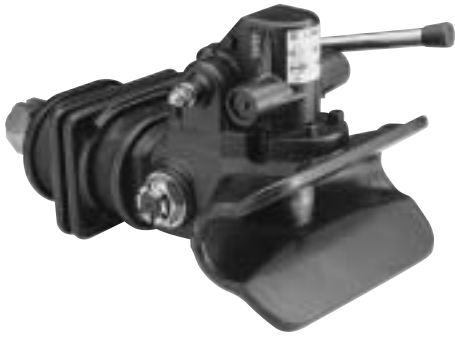
A	Leva alta - Action lever upwards - Handhebel aufwärts - Levier d'ouverture vers le haut
B	Leva bassa - Action lever downwards - Handhebel abwärts - Levier d'ouverture vers le bas



Tipo - Type Typ - Type	A (mm)	B (mm)	C (mm)	D (mm)	E (mm)	F (mm)	G (mm)	H (mm)	I (mm)	L (mm)	M (mm)	N (mm)
E503	182	156	463	120	55	15	20	155	90	73.9		35
E504	182	156	463	140	80	17	20	180	120	83.9		35
E505	182	156	463	160	100	21	20	200	140	93.9		35
E506	182	205	512	160	100	21	25	200	140	93.9	5	35
E509	196	191	512	160	100	21	25	200	140	93.9	20	35
E510	182	205	512	160	100	21	25	200	140	93.9	12	30



POS.	Tutti i tipi All types Alle Typen Tous les types	Tipo - Type - Typ - Type					
		E 503	E 504	E 505	E 506	E 509	E 510
1	RG00034						
2	RG00064						
3		RG00076	RG00175	RG00175	RG00175	RG00175	RG00175
4A		RG00216	RG00189	RG00189			
4B		RG00216	RG00189	RG00189	RG00173	RG00173	RG00173
5	RG00088						
6A		RG00182	RG00195	RG00192			RG00372
6B					RG00174	RG00222	RG00373
7		RG00217	RG00183	RG00183	RG00184	RG00184	RG00374
8		RG00196	RG00196	RG00196	RG00197	RG00197	RG00197
9M	RG00267						
9P	RG00268						
10	RG00199						
11	RG00180						
12		RG00194	RG00194	RG00194	RG00193	RG00193	RG00193
13	RG00190						
14	RG00188						
15	RG00179						
16	RG00178						
17	RG00181						
18	RG00091						
19	RG00191						
20	RG00185						
21A	RG00186						
21B	RG00187						
22A	RG00176						
22B	RG00177						
23		RG00130	RG00131	RG00132	RG00132	RG00132	RG00132
24M	RG00269						
24P	RG00270						
25	RG00271						



# EH 50

Ganci automatici  
Automatic couplings  
Vollautomatische  
Anhängerkupplungen  
Crochets automatiques

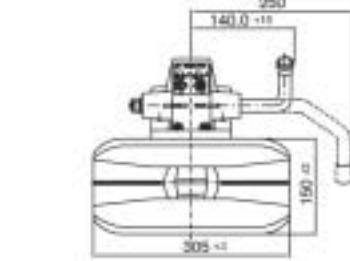
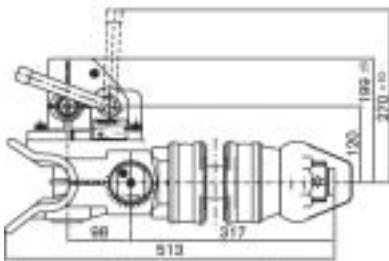
Per occhioni - For drawbar eyes  
Für Zugösen - Pour anneaux

∅  
**50**

94 / 20 / CE

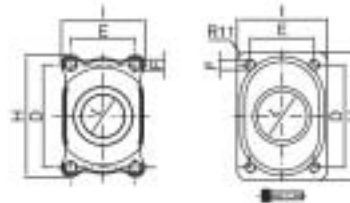
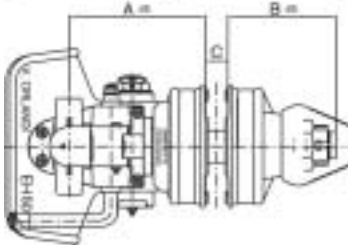
## Dati tecnici - Technical data - Technische Daten - Données techniques

Tipo Type Typ Type	Versioni Versions Ausführungen Versions	Flangia Hole pattern Lochbild Entr'axe mm	Valore D D-Value D-Wert Valeur D kN	Peso Weight Gewicht Poids kg	94 / 20 / CE	
					Classe Class Klasse Classe	Omologazione Homologation Genehmigung Homologation
EH 503	EH 503A0 EH 503B0	120x55	130	37	C50-X	e3 00-0395
EH 502	EH 502A0 EH 502B0	140x80	220	39	C50-X	e3 00-0394
EH 501	EH 501A0 EH 501B0	160x100	220	39	C50-X	e3 00-0393
EH 521	EH 521A0 EH 521B0	160x100	220	41		
EH 531	EH 531A0 EH 531B0	160x100	220	41		



EH 501-EH 502-EH 503

EH 521-EH 531

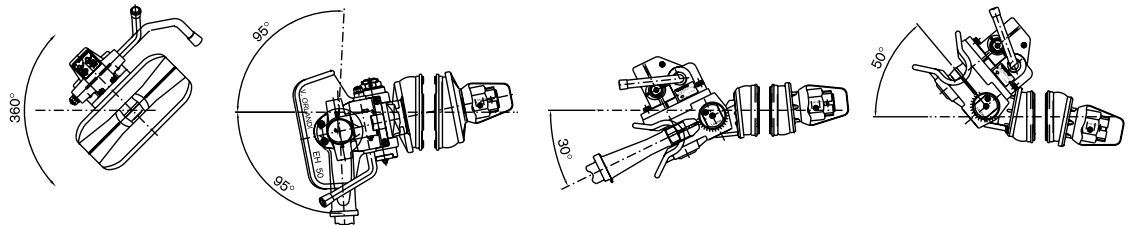


Dimensioni A/B: quote del gancio montato (su veicolo)  
Dimensions A/B: dimensions of the coupling installed to the vehicle  
Dimensionen A/B: Dimensionen der Kupplung im Fahrzeug  
Dimensions A/B: dimensions du crochet monté sur le véhicule

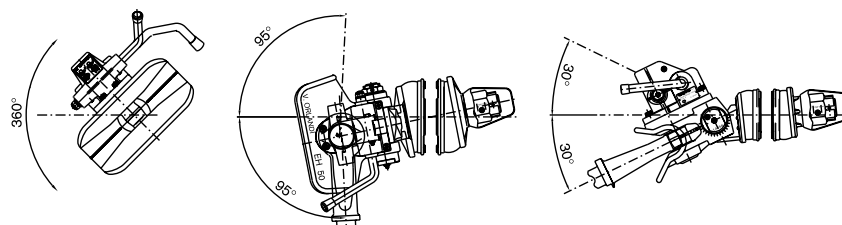
	Versione - Version Ausführung - Version
<b>A</b>	Leva alta Action lever upwards Handhebel aufwärts Lever d'ouverture vers le haut
<b>B</b>	Leva bassa Action lever downwards Handhebel abwärts Lever d'ouverture vers le bas

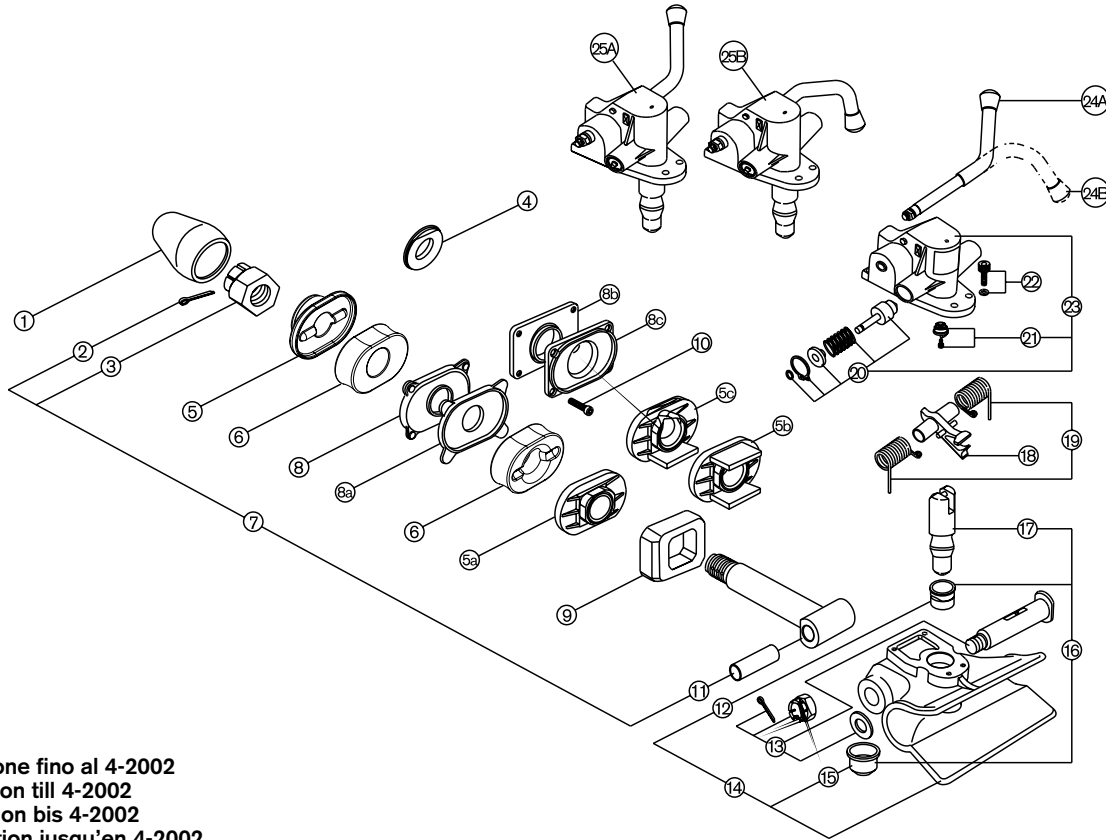
Tipo - Type Typ - Type	A (mm)	B (mm)	C (mm)	D (mm)	E (mm)	F (mm)	H (mm)	I (mm)	L (mm)
EH 503	210	170	35	120	55	∅14	164	118	∅74
EH 502	212	168	35	140	80	∅19	190	130	∅84
EH 501	212	168	35	160	100	∅19	190	130	∅92
EH 521	217	163	35	160	100	M16	200	140	∅93
EH 531	215	165	35	160	100	M16	200	140	∅93

Rotazioni possibili per il modello EH 521  
Possible turning angles for the model EH 521  
Mögliche Schwenkwinkel des Modells EH 521  
Les rotations possibles pour le modèle EH 521



Rotazioni possibili per i modelli EH501/511/531/502/503  
Possible turning angles for the models EH501/511/531/502/503  
Mögliche Schwenkwinkel der Modelle EH501/511/531/502/503  
Les rotations possibles pour les modèles EH501/511/531/502/503





\*In produzione fino al 4-2002  
\*In production till 4-2002  
\*In Produktion bis 4-2002  
\*En production jusqu'en 4-2002

POS.	Tutti i tipi All types Alle Typen Tous les types	Tipo - Type - Typ - Type						
		EH 501	EH 521	EH 531	EH 502	EH 503	EH 501/511* 521*/531*/502*	EH 503*
1	RG00034							
2	RG00064							
3	RG00172							
4							RG00237	RG00237
5		RG00297	RG00297	RG00297	RG00297	RG00027	RG00042	RG00028
5a		RG00296		RG00296	RG00296	RG00028	RG00042	RG00028
5b							RG00239	
5c			RG00299				RG00238	
6		RG00241	RG00241	RG00241	RG00241	RG00037	RG00036	RG00037
7	RG00233							
8/8a		RG00030			RG00029	RG00031		
8b			RG000135	RG00135			RG00135	
8c			RG000134	RG00134			RG00134	
9		RG00038		RG00038	RG00038	RG00038		
10			RG00209	RG00209			RG00209	
11	RG00004							
12	RG00088							
13	RG00002							
14	RG00235							
15	RG00236							
16	RG00232							
17	RG00231							
18	RG00298							RG00188
19	RG00178							
20	RG00181							
21	RG00091							
22	RG00185							
23	RG00191							
24A	RG00186							
24B	RG00187							
25A	RG00229							
25B	RG00230							



# MCX 50

Ganci automatici  
Automatic couplings  
Vollautomatische  
Anhängerkupplungen  
Crochets automatiques

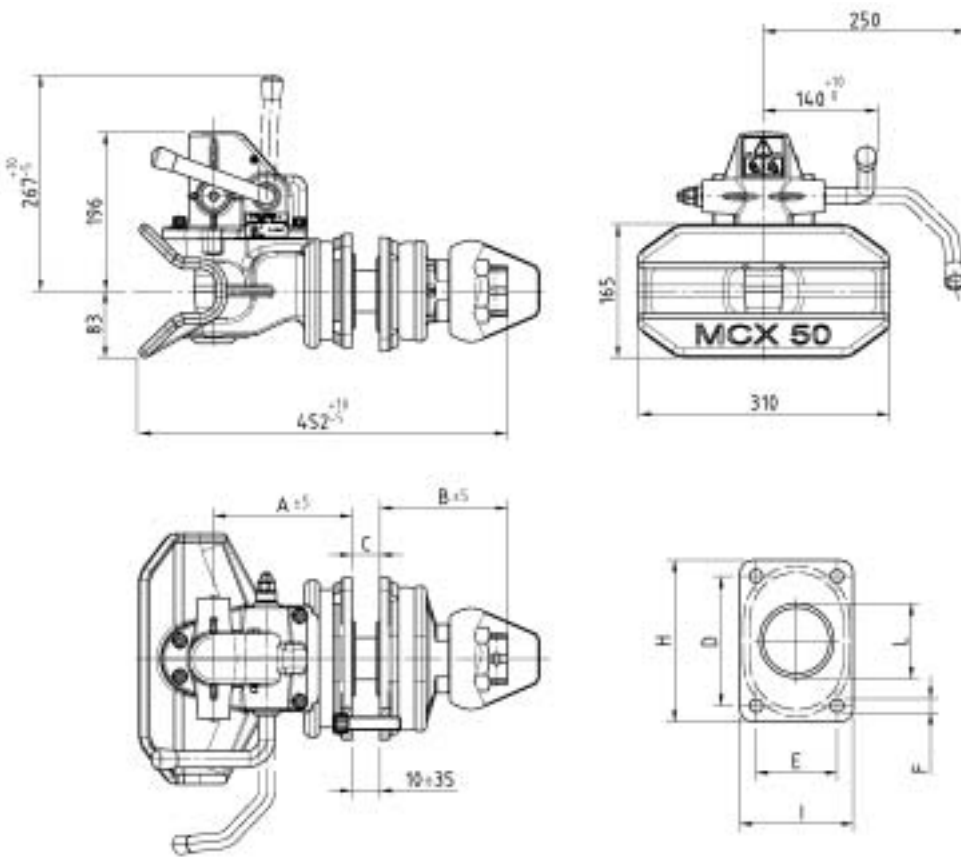
Per occhielli - For drawbar eyes  
Für Zugösen - Pour anneaux

Ø  
**50**

94 / 20 / CE

## Dati tecnici - Technical data - Technische Daten - Données techniques

Tipo Type Typ Type	Versioni Versions Ausführungen Versions	Flangia Hole pattern Lochbild Entr'axe mm	Valore D D-Value D-Wert Valeur D kN	Peso Weight Gewicht Poids kg	94 / 20 / CE	
					Classe Class Klasse Classe	Omologazione Homologation Genehmigung Homologation
MC 511	MC 511A0 MC 511B0	160x100	250	36	C50-X	e3 00-0458



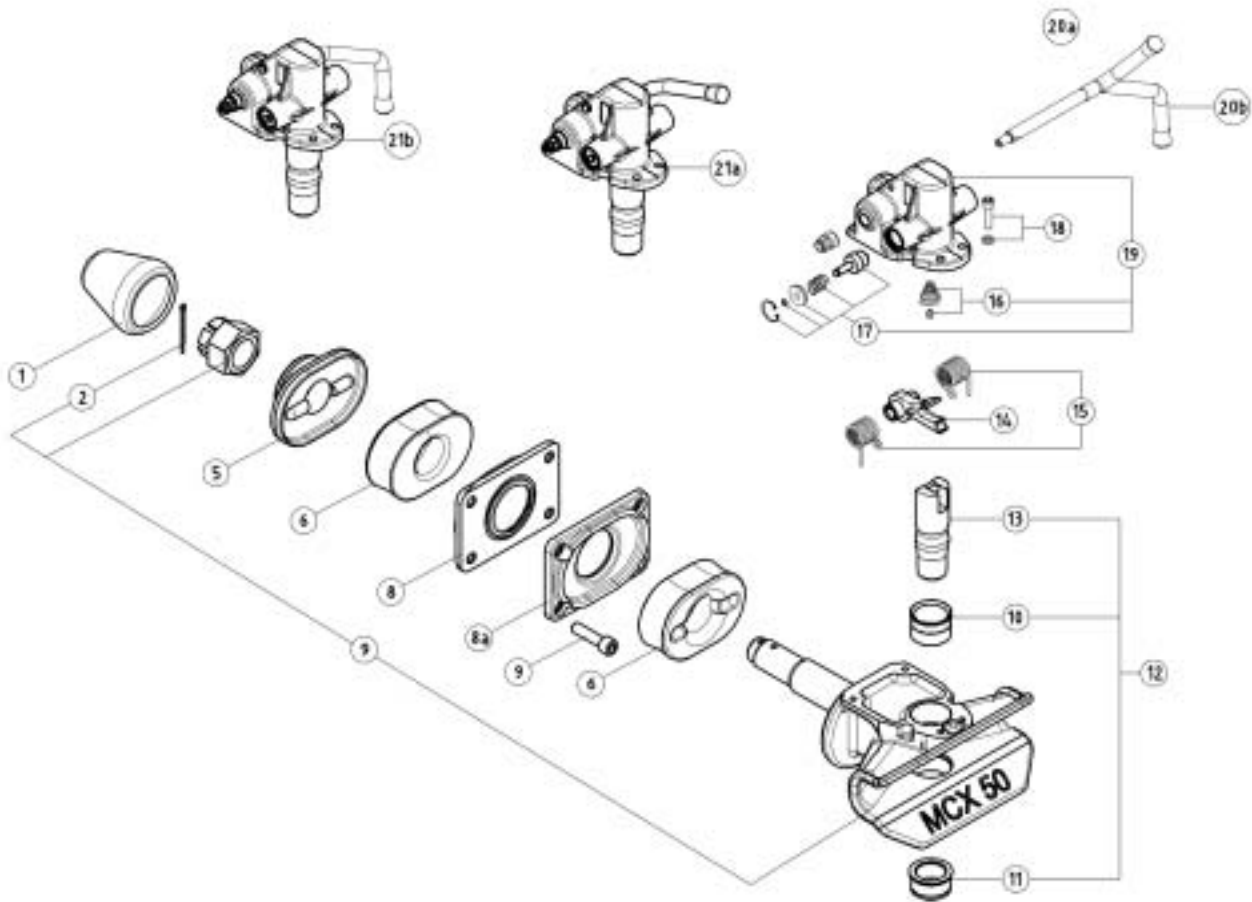
Versione - Version Ausführung - Version	
A	Leva alta Action lever upwards Handhebel aufwärts Lever d'ouverture vers le haut
B	Leva bassa Action lever downwards Handhebel abwärts Lever d'ouverture vers le bas

Dimensioni A/B: quote del gancio montato su veicolo - Dimensions A/B: dimensions of the coupling installed to the vehicle  
Dimensionen A/B: Dimensionen der Kupplung im Fahrzeug - Dimensions A/B: dimensions du crochet monté sur le véhicule

Tipo - Type Typ - Type	A (mm)	B (mm)	C (mm)	D (mm)	E (mm)	F (mm)	H (mm)	I (mm)	L (mm)
MC 511	171	158	35	160	100	øM16	200	140	ø93

Rotazioni possibili per il modello MCX 50 - Possible turning angles for the model MCX 50  
Mögliche Schwenkwinkel des Modells MCX 50 - Les rotations possibles pour le modele MCX 50





POS.	Tutti i tipi All types Alle Typen Tous les types	Tipo - Type - Typ - Type		
		MC 501 / MC 511		
1	RG00034			
2	RG00064			
5	RG00297			
6	RG00241			
7	RG00242			
8		RG00135		
8a		RG00134		
9	RG00209			
10	RG00088			
11	RG00236			
12	RG00232			
13	RG00231			
14	RG00298			
15	RG00178			
16	RG00091			
17	RG00181			
18	RG00185			
19	RG00191			
20a	RG00186			
20b	RG00187			
21a	RG00229			
21b	RG00230			





# E 40

Ganci automatici  
Automatic couplings  
Vollautomatische  
Anhängerkupplungen  
Crochets automatiques

Per occhielli - For drawbar eyes  
Für Zugösen - Pour anneaux

Ø  
**40**

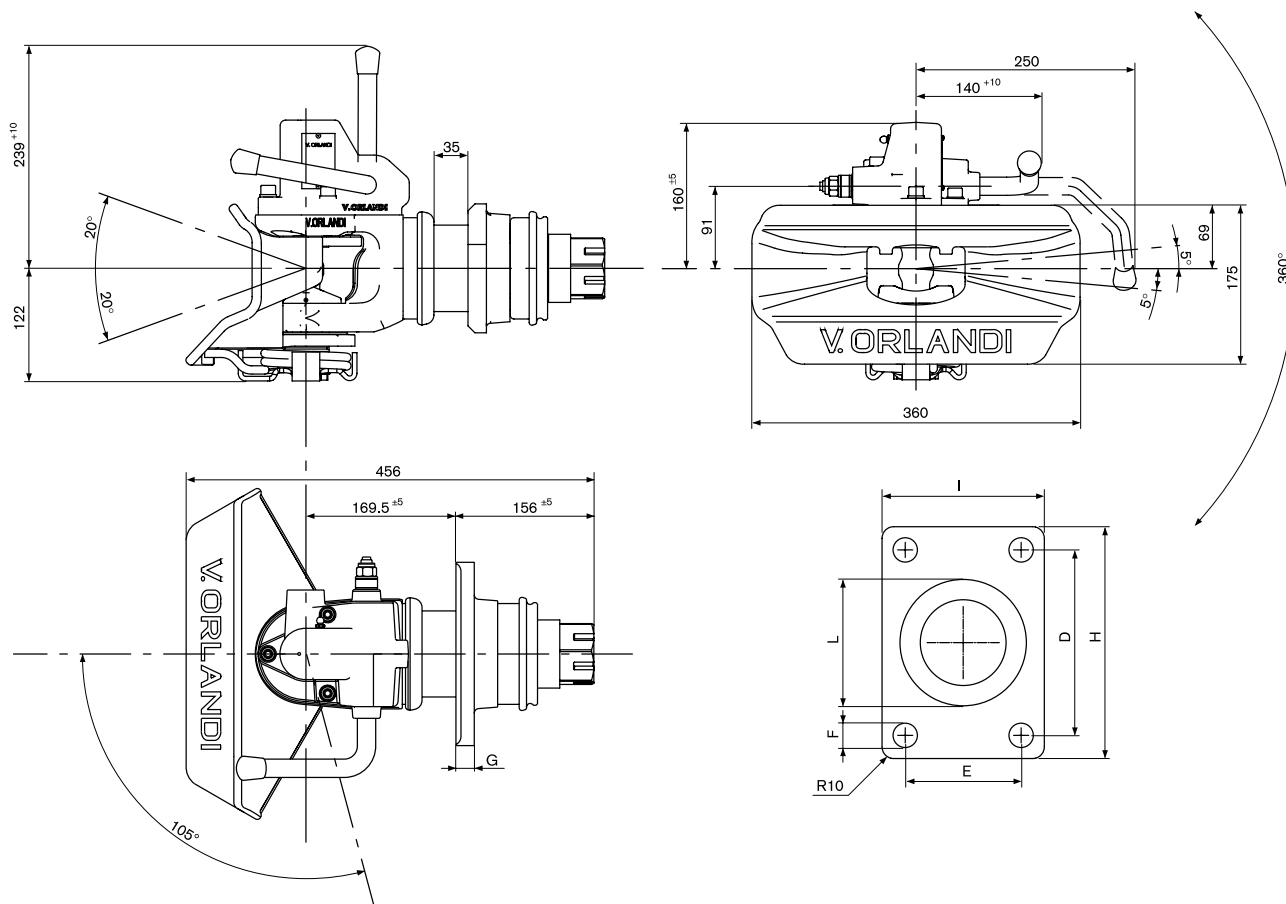
DIN 74054

## Dati tecnici - Technical data - Technische Daten - Données techniques

Tipo Type Typ Type	Codice Article number Artikelnummer Numéro d'ordre	Flangia Hole pattern Lochbild Entr'axe mm	Valore D D-Value D-Wert Valeur D kN	Valore Dc Dc-Value Dc-Wert Valeur Dc kN	Massa S S-Load S-Last Masse S kg	Valore V V-Value V-Wert Valeur V kN	Peso Weight Gewicht Poids kg	94 / 20 / CE	
								Classe Class Klasse Classe	Omologazione Homologation Genehmigung Homologation
E 403	GE403A0 GE403B0	120x55	70	70	700	28	34	S	e11 00-4224
E 404	GE404A0 GE404B0	140x80	110	92	1000	38	35.5	S	e11 00-4228
E 406	GE406A0 GE406B0	160x100	150	100	1000	42	37.5	S	e11 00-4227

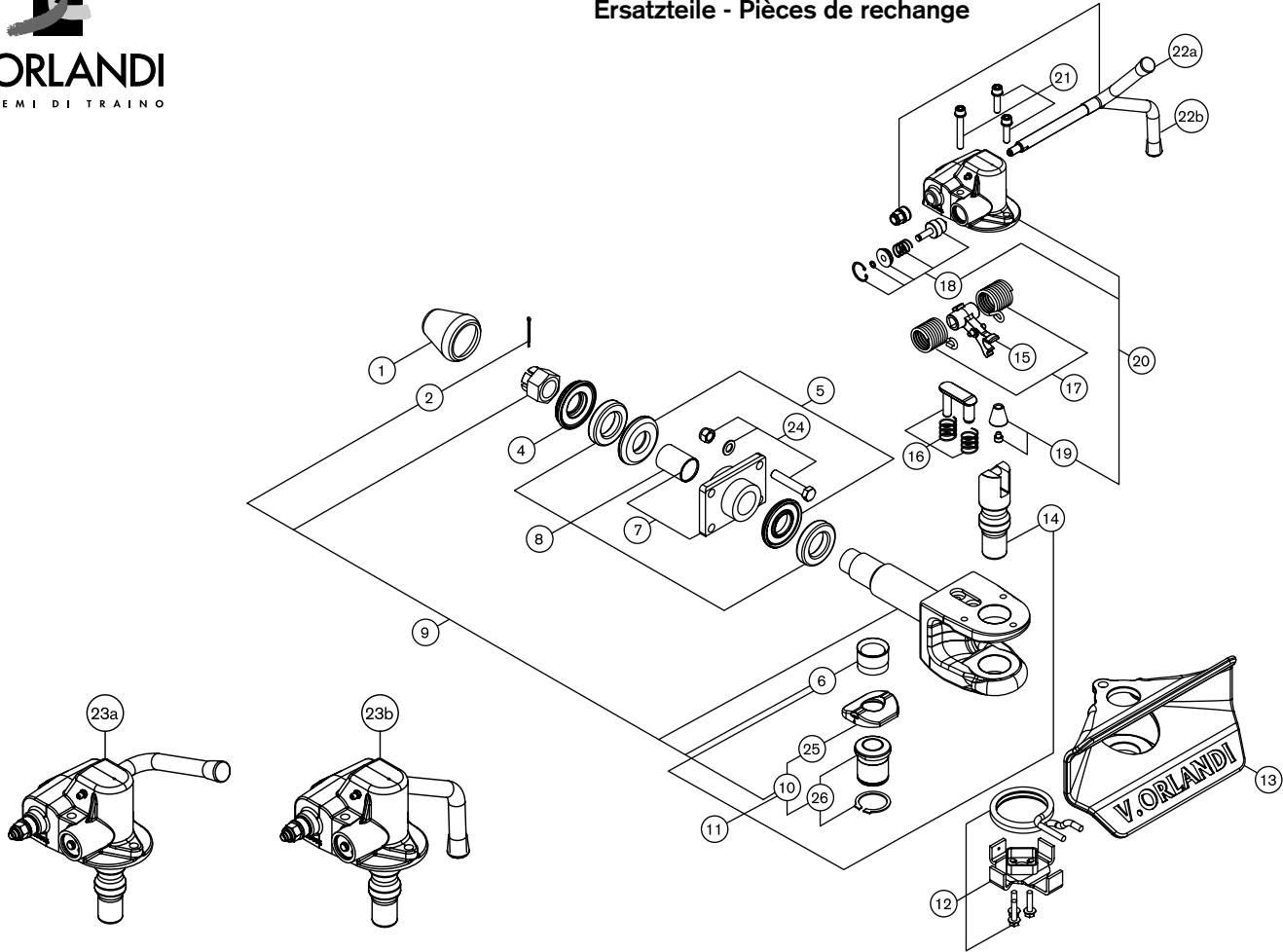
### Versione - Version - Ausführung - Version

<b>A</b>	Leva alta - Action lever upwards - Handhebel aufwärts - Levier d'ouverture vers le haut
<b>B</b>	Leva bassa - Action lever downwards - Handhebel abwärts - Levier d'ouverture vers le bas



1990 181-B

Tipo - Type Typ - Type	D (mm)	E (mm)	F (mm)	H (mm)	I (mm)	L (mm)
E403	120	55	15	155	90	73.90
E404	140	80	17	180	120	83.90
E406	160	100	21	200	140	93.90



POS.	Tutti i tipi All types Alle Typen Tous les types	Tipo - Type - Typ - Type		
		E 403	E 404	E 406
1	RG00034			
2	RG00064			
4		RG00076	RG00175	RG00175
5a		RG00216	RG00189	RG00189
5b		RG00216	RG00189	RG00189
6	RG00149			
7		RG00182	RG00195	RG00192
8		RG00217	RG00183	RG00183
9	RG00301			
10	RG00302			
11	RG00303			
12	RG00180			
13	RG00304			
14	RG00305			
15	RG00306			
16	RG00307			
17	RG00308			
18	RG00309			
19	RG00310			
20	RG00311			
20s	RG00355			
21	RG00312			
22A	RG00186			
22b	RG00187			
23A	RG00313			
23As	RG00353			
23B	RG00314			
23Bs	RG00354			
24		RG00130	RG00131	RG00132
25	RG00315			
26	RG00316			

s: predisposizione al segnalatore di apertura/chiusura - predisposition to open/close remote indicator  
Geelgnet für den Einbau elner Fernanzeige - Able pour l'indicateur à distance d'ouverture du crochet



# EH 45

Ganci automatici  
Automatic couplings  
Vollautomatische  
Anhängerkupplungen  
Crochets automatiques

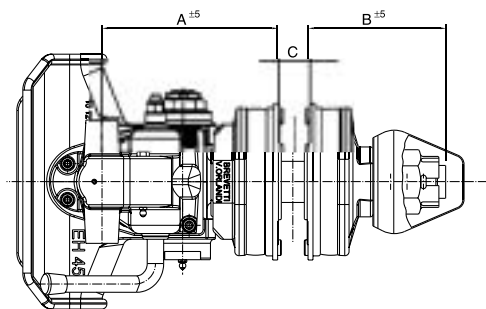
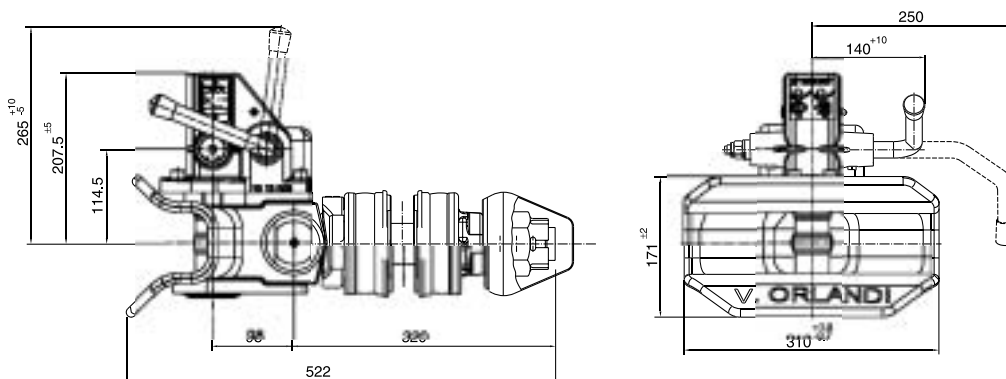
Per occhielli - For drawbar eyes  
Für Zugösen - Pour anneaux

Ø  
**45**

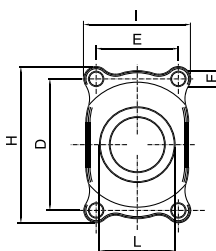
CUNA 438 - 55

## Dati tecnici - Technical data - Technische Daten - Données techniques

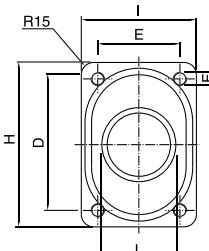
Tipo Type Typ Type	Versioni Versions Ausführungen Versions	Flangia Hole pattern Lochbild Entr'axe mm	Valore D D-Value D-Wert Valeur D kN	Peso Weight Gewicht Poids kg	94 / 20 / CE	
					Classe Class Klasse Classe	Omologazione Homologation Genehmigung Homologation
EH 453	EH453A0 EH453B0	120x55	130	36.5	S	e3 00-1557
EH 452	EH452A0 EH452B0	140x80	200	38.5	S	e3 00-1556
EH 451	EH451A0 EH451B0	160x100	200	38.5	S	e3 00-1555
EH 461	EH461A0 EH461B0	160x100	200	41.5		



EH451-EH452-EH453



EH461



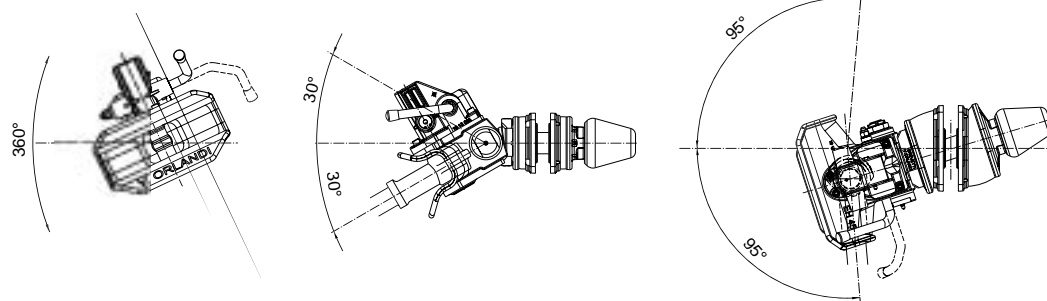
Tipo - Type Typ - Type	A (mm)	B (mm)	C (mm)	D (mm)	E (mm)	F (mm)	H (mm)	I (mm)	L (mm)
EH 453	210	170	35	120	55	ø14	164	118	ø74
EH 452	212	168	35	140	80	ø19	190	130	ø84
EH 451	212	168	35	160	100	ø19	190	130	ø92
EH 461	215	165	35	160	100	M16	200	140	ø93

Dimensioni A/B: quote del gancio  
montato su veicolo  
Dimensions A/B: dimensions of  
the coupling installed to the vehicle  
Dimensionen A/B: Dimensionen  
der Kupplung im Fahrzeug  
Dimensions A/B: dimensions du  
crochet monté sur le véhicule

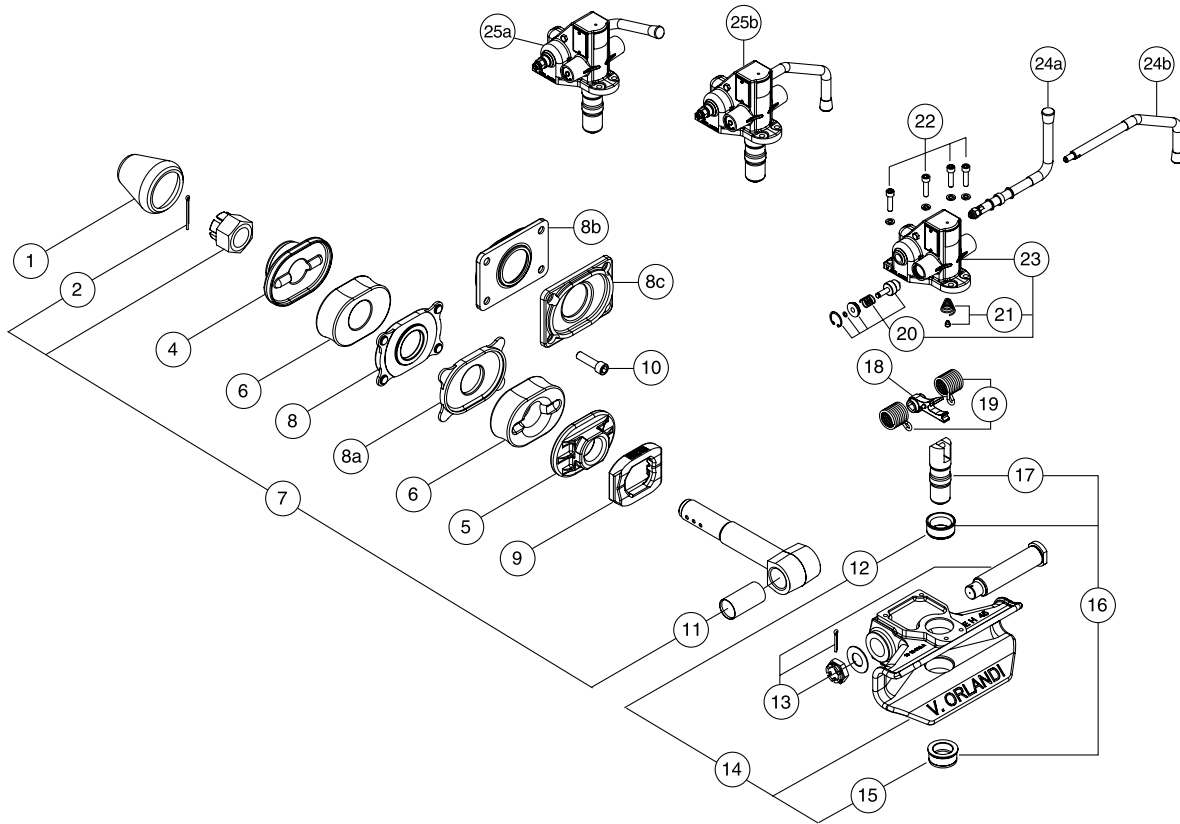
### Versione - Version Ausführung - Version

<b>A</b>	Leva alta Action lever upwards Handhebel aufwärts Lever d'ouverture vers le haut
<b>B</b>	Leva bassa Action lever downwards Handhebel abwärts Lever d'ouverture vers le bas

Rotazioni possibili per i modelli  
EH451/452/453/461  
Possible turning angles for the  
models EH451/452/453/461  
Mögliche Schwenkwinkel der  
Modelle EH451/452/453/461  
Les rotations possibles pour les  
modeles EH451/452/453/461



1990 175 B



POS.	Tutti i tipi All types Alle typen Tous les types	Tipo - Type - Typ - Type			
		EH 451	EH 452	EH 453	EH 461
1	RG00034				
2	RG00064				
4		RG00297	RG00297	RG00027	RG00297
5		RG00296	RG00296	RG00028	RG00296
6		RG00241	RG00241	RG00037	RG00241
7	RG00233				
8/8a		RG00030	RG00029	RG00031	
8b					RG00135
8c					RG00134
9	RG00038				
10					RG00209
11	RG00004				
12	RG00293				
13	RG00002				
14	RG00292				
15	RG00294				
16	RG00290				
17	RG00289				
18	RG00291				
19	RG00178				
20	RG00181				
21	RG00091				
22	RG00185				
23	RG00285				
24a	RG00186				
24b	RG00187				
25a	RG00286				
25b	RG00287				



# NUOVO LUPO

Ganci manuali  
Manual couplings  
Manuelle Anhängerkupplungen  
Crochets manuels

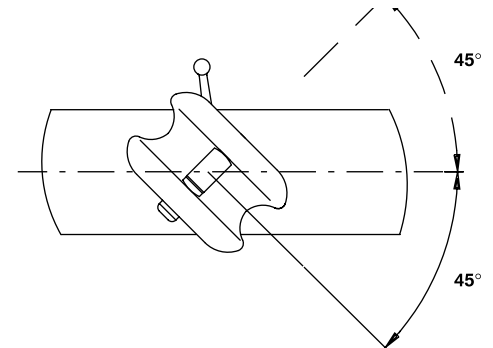
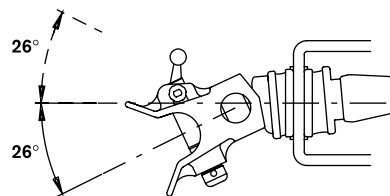
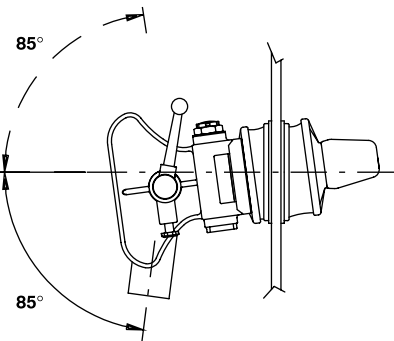
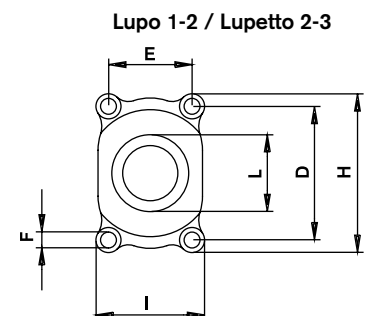
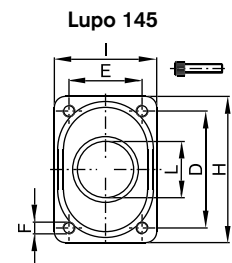
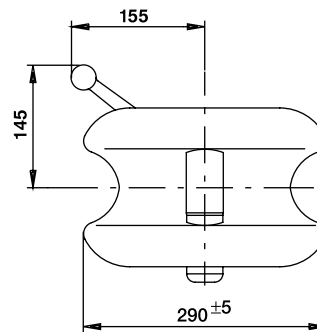
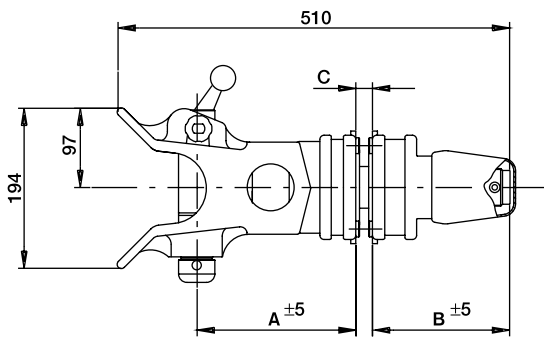
Per occhioni - For drawbar eyes  
Für Zugösen - Pour anneaux

Ø  
**45**

CUNA 438 - 55

## Dati tecnici - Technical data - Technische Daten - Données techniques

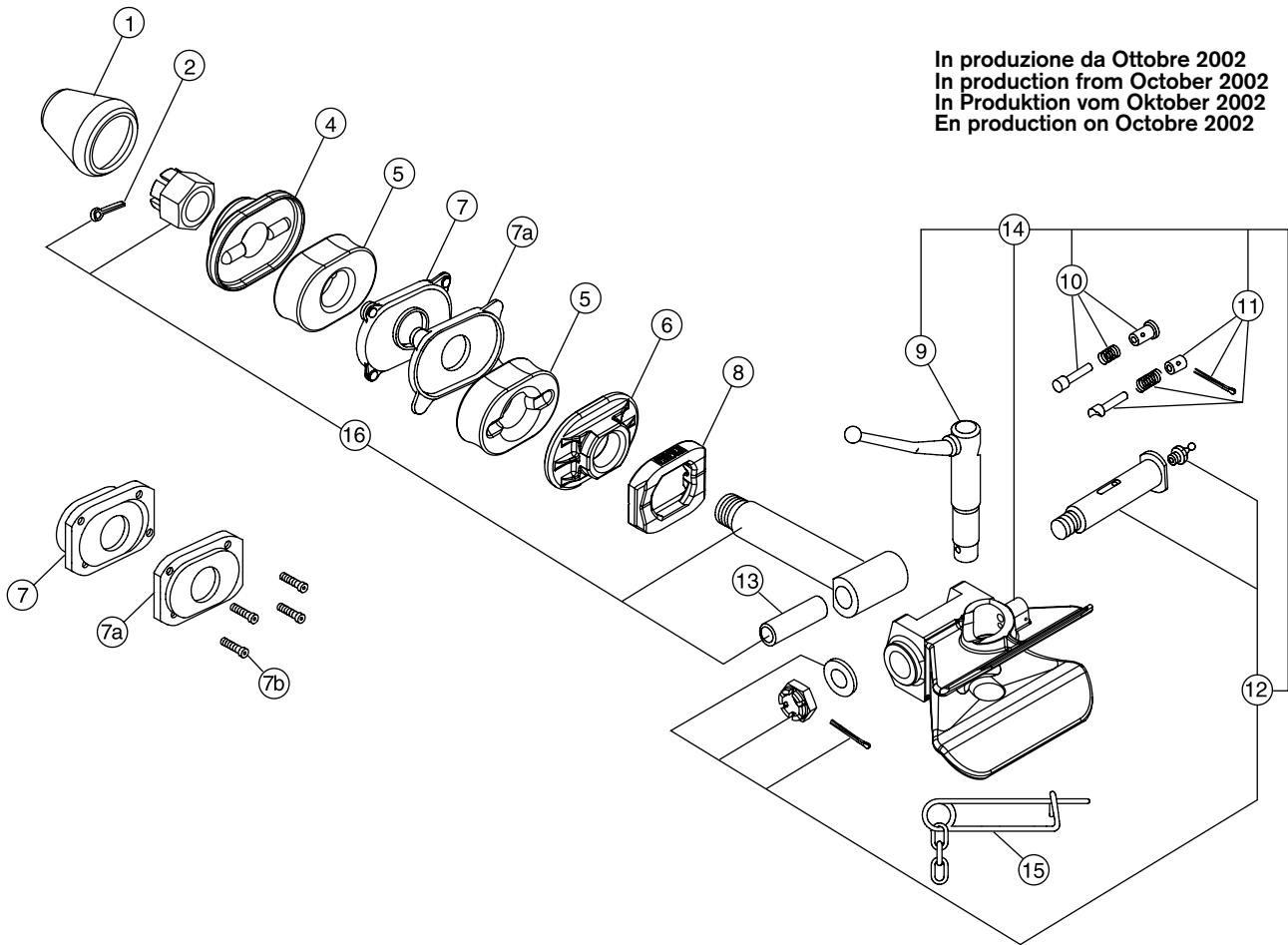
Tipo Type Typ Type	Codice Article number Artikelnummer Numéro d'ordre	Flangia Hole pattern Lochbild Entr'axe mm	Peso rimorchiabile Total trailer weight Anhängelast Poids total de charge t	Peso Weight Gewicht Poids kg	CUNA NC 138-55	
					CAT.	DGM
LUPETTO/3	LU113A0	120x55	16	29	IV	47794
LUPETTO/2	LU112A0	140x80	16	30	IV	47793
LUPO/2	LU102A0	140x80	26	33	V	47105
LUPO/1	LU101A0	160x100	26÷42	33	V	47106
LUPO/145	LU145A0	160x100	26÷42	34	V	51870



1990 182 A

Tipo - Type Typ - Type	A (mm)	B (mm)	C (mm)	D (mm)	E (mm)	F (mm)	H (mm)	I (mm)	L (mm)
LUPETTO/3	206	174	35	120	55	14	164	118	74
LUPETTO/2	210	170	35	140	80	15	180	125	84
LUPO/2	210	170	35	140	80	15	180	125	84
LUPO/1	210	170	35	160	100	19	190	130	92
LUPO/145	210	170	35	160	100	M16	200	140	92

In produzione da Ottobre 2002  
In production from October 2002  
In Produktion vom Oktober 2002  
En production on Octobre 2002



POS.	Tutti i tipi All types Alle Typen Tous les types	Tipo - Type - Typ - Type				
		LUPO 1	LUPO 2	LUPETTO 2	LUPO T45	LUPETTO 3
1	RG00034					
2	RG00064					
4		RG00297	RG00297	RG00297	RG00297	RG00027
5		RG00241	RG00241	RG00241	RG00241	RG00037
6		RG00296	RG00296	RG00296	RG00296	RG00028
7		RG00030	RG00029	RG00029	RG00135	RG00031
7a		RG00030	RG00029	RG00029	RG00134	RG00031
7b					RG00209	
8	RG00038					
9	RG00048					
10	RG00074					
11	RG00093					
12	RG00002					
13	RG00004					
14		RG00300	RG00318	RG00319	RG00320	RG00321
15	RG00052					
16	RG00233					



# GX 57

Ganci automatici  
Automatic couplings  
Vollautomatische Anhängerkupplungen  
Crochets automatiques

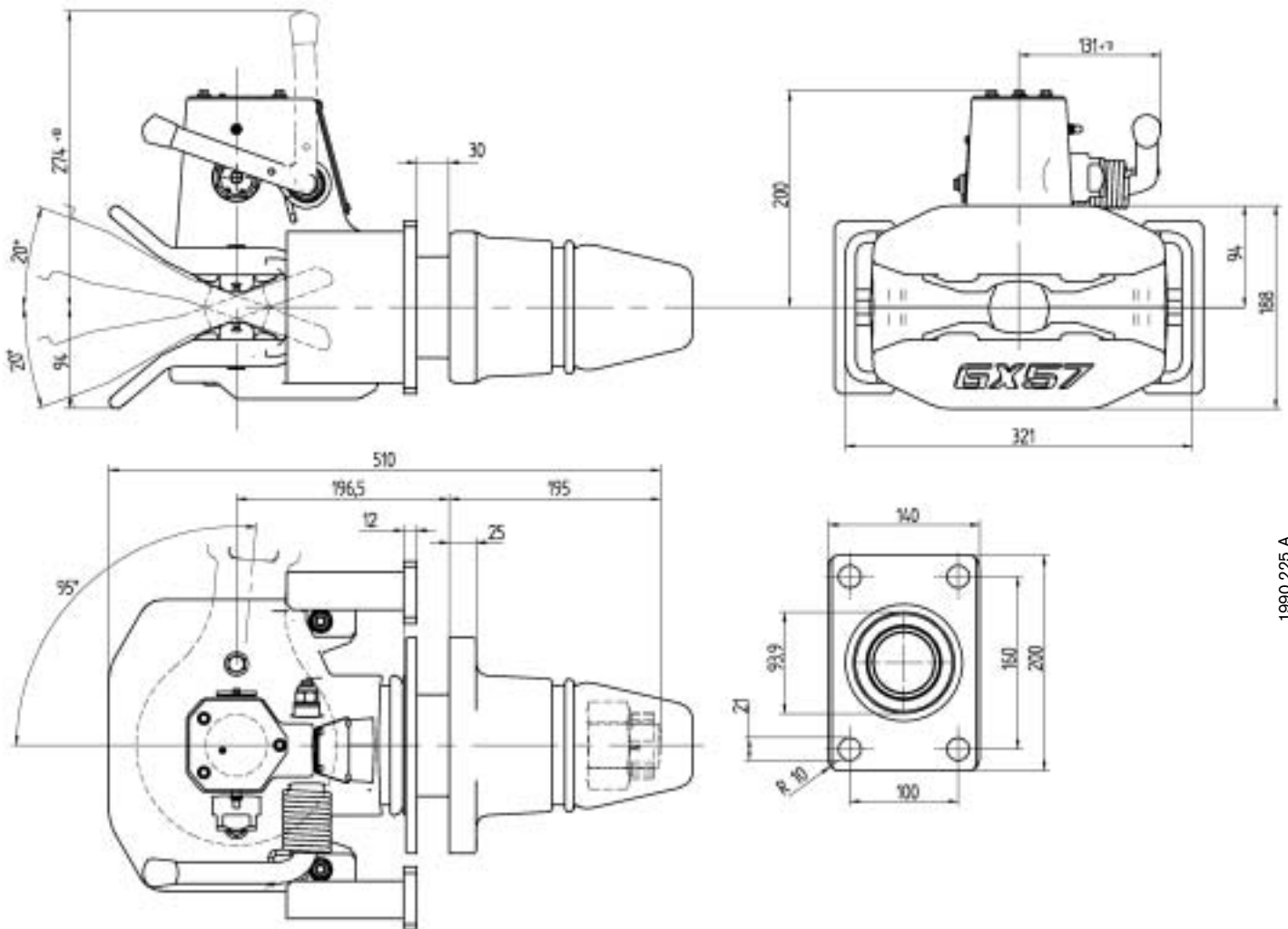
Per occhioni - For drawbar eyes  
Für Zugösen - Pour anneaux

**57,5**

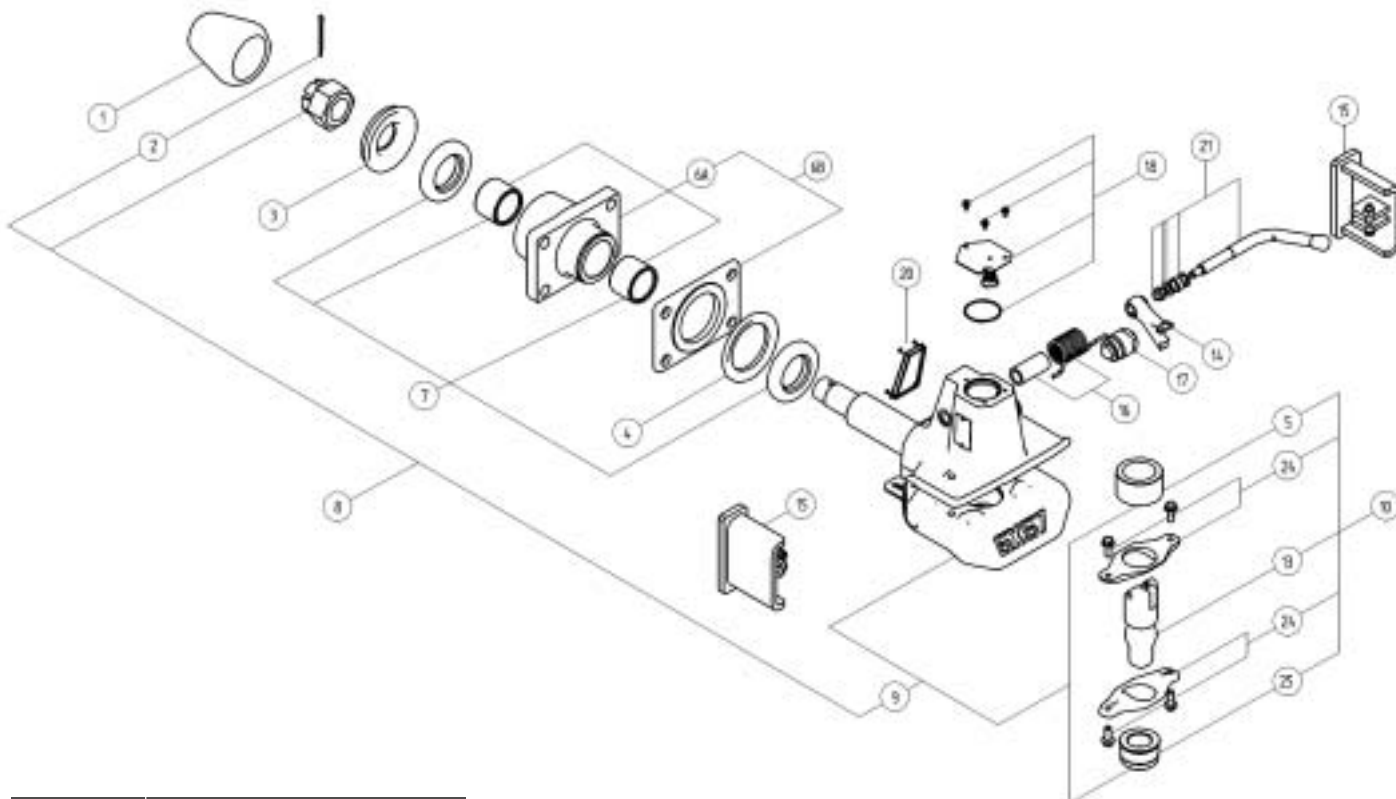
SWEDISH STD

## Dati tecnici - Technical data - Technische Daten - Données techniques

Tipo Type Typ Type	Versioni Versions Ausführungen Versions	Flangia Hole pattern Lochbild Entr'axe mm	Valore D D-Value D-Wert Valeur D kN	Valore Dc Dc-Value Dc-Wert Valeur Dc kN	Massa S S-Load S-Last Masse S kg	Valore V V-Value V-Wert Valeur V kg	Peso Weight Gewicht Poids kg	94 / 20 / CE	
								Classe Class Klasse Classe	Omologazione Homologation Genehmigung Homologation
GX570	GX570A0	160x100	290	145	1000	95	52	S	e11 00-XXXX



1990 225 A



POS.	Tutti i tipi All types Alle Typen Tous les types
1	RG00034
2	RG00064
3	RG00175
4	RG00173
5	RG00371
6a	RG00372
6b	RG00373
7	RG00374
8	RG00375
9	RG00376
10	RG00377
13	RG00378
14	RG00379
15	RG00380
16	RG00381
17	RG00382
18	RG00383
20	RG00384
21	RG00385
24	RG00386
25	RG00387





# GA 38

Ganci automatici  
Automatic couplings  
Automatische  
Anhängerkupplungen  
Crochets automatiques

Per occhioni - For drawbar eyes  
Für Zugösen - Pour anneaux

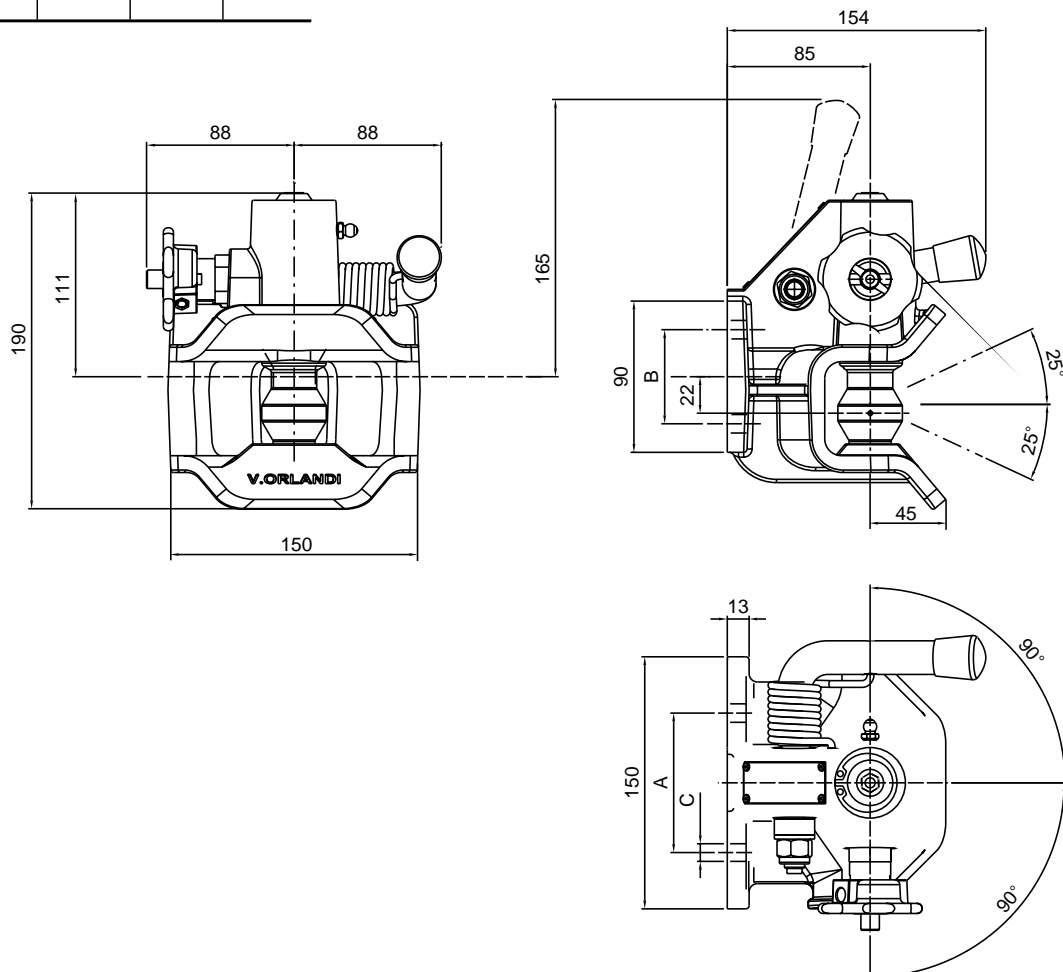
Ø  
**40**

DIN 74054

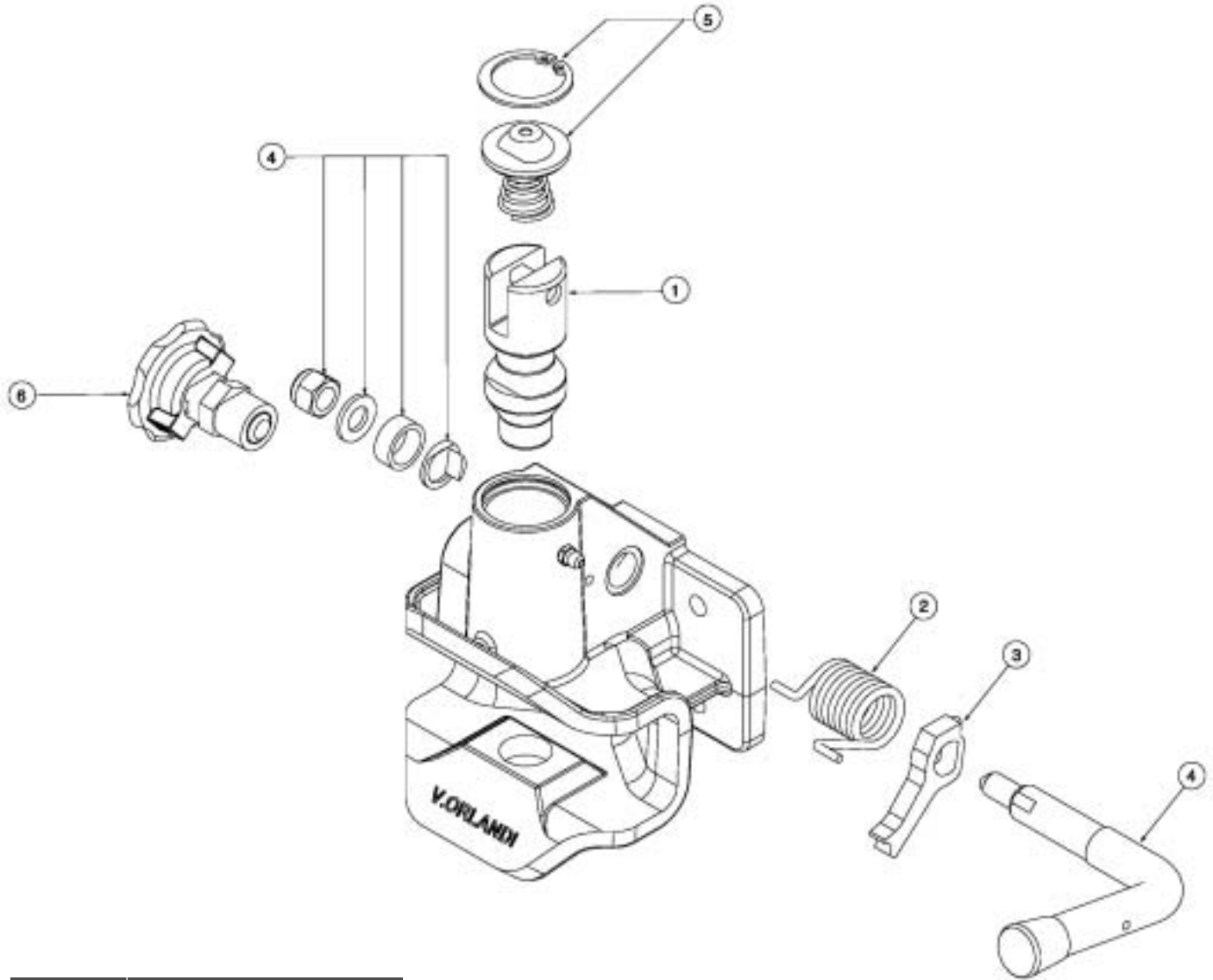
## Dati tecnici - Technical data - Technische Daten - Données techniques

Codice Article number Artikelnummer Numéro d'ordre	Flangia Hole pattern Lochbild Entr'axe mm	Valore D D-Value D-Wert Valeur D kN	Valore Dc Dc-Value Dc-Wert Valeur Dc kN	Massa S S-Load S-Last Masse S kg	Valore V V-Value V-Wert Valeur V kN	Peso Weight Gewicht Poids kg	94 / 20 / CE	
							Classe Class Klasse Classe	Omologazione Homologation Genehmigung Homologation
GA380A0	120x55	30	30	350	18	5.8	S	e11 00-3282
GA382A0	83x56	30	30	350	18	5.8	S	e11 00-3281
GA383A0	83x56	22.5	-	250	-	5.8	S	e11 00-1613

Tipo Type Typ Type	A (mm)	B (mm)	C (mm)
GA380	120	55	15
GA382	83	56	10.5
GA383	83	56	10.5



1990 144 B



POS.	Codice Article number Artikelnummer Numéro d'ordre
1	RG00254
2	RG00255
3	RG00256
4	RG00257
5	RG00258
6	RG00148



# GA 25

Ganci automatici  
Automatic couplings  
Vollautomatische  
Anhängerkupplungen  
Crochets automatiques

Per occhioni - For drawbar eyes  
Für Zugösen - Pour anneaux

DIN 8454

DIN 74054

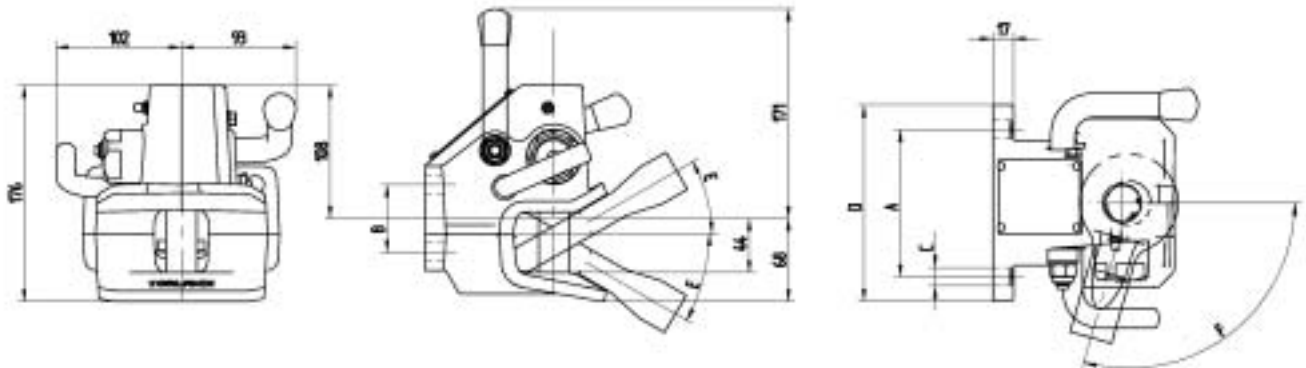
CUNA 438 - 40

SWISS

## Dati tecnici - Technical data - Technische Daten - Données techniques

Tipo Type Typ Type	A mm	B mm	C mm	D mm	E				F			
					DIN8454 Drawbar eye (°)	DIN74054 Drawbar eye (°)	CUNA 438-40 Drawbar eye (°)	SWISS Drawbar eye (°)	DIN8454 Drawbar eye (°)	DIN74054 Drawbar eye (°)	CUNA 438-40 Drawbar eye (°)	SWISS Drawbar eye (°)
GA250	120	55	15	160	+/-30	+/-22	+/-20	+/-10	105	95	100	100
GA251	130	30	14	155	+/-30	+/-22	+/-20	+/-10	105	95	100	100
GA252	120	55	15	160	+/-30	+/-22	+/-20	+/-10	105	95	100	100
GA253	130	30	14	155	+/-30	+/-22	+/-20	+/-10	105	95	100	100

Tipo Type Typ Type	Versioni Versions Ausführungen Versions	Flangia Hole pattern Lochbild Entr'axe mm	Valore D D-Value D-Wert Valeur D kN	Valore Dc Dc-Value Dc-Wert Valeur Dc kN	Massa S S-Load S-Last Masse S kg	Peso Weight Gewicht Poids kg	94 / 20 / CE	
							Classe Class Klasse Classe	Omologazione Homologation Genehmigung Homologation
GA250	GA250A0	120x55	42	30	250	7,5	S	e3 00-3007
GA251	GA251A0	130x30	42	30	250	7	S	e3 00-3008



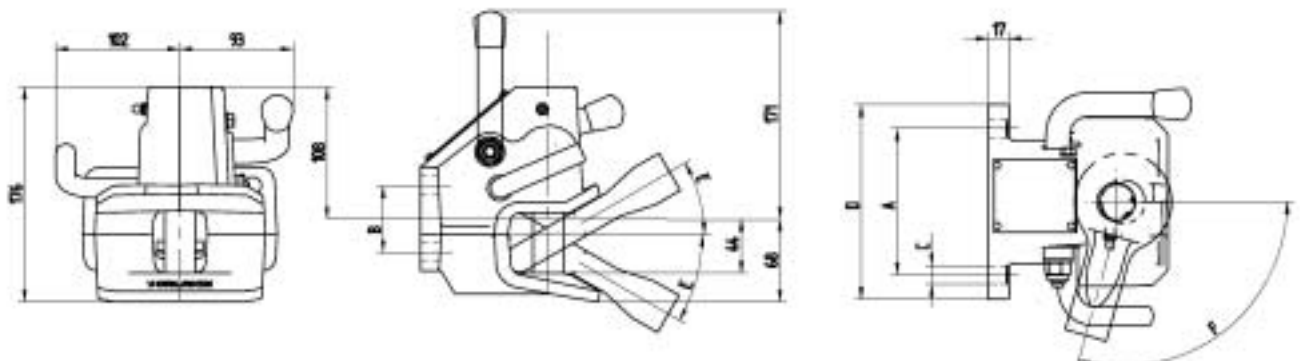
Tipo Type Typ Type	Versioni Versions Ausführungen Versions	Flangia Hole pattern Lochbild Entr'axe mm	Valore D D-Value D-Wert Valeur D kN	Valore Dc Dc-Value Dc-Wert Valeur Dc kN	Massa S S-Load S-Last Masse S kg	Peso Weight Gewicht Poids kg	94 / 20 / CE	
							Classe Class Klasse Classe	Omologazione Homologation Genehmigung Homologation
GA252	GA252A0	120x55	42			7	S	e3 00-3007
GA253	GA253A0	130x30	42			6,5	S	e3 00-3008

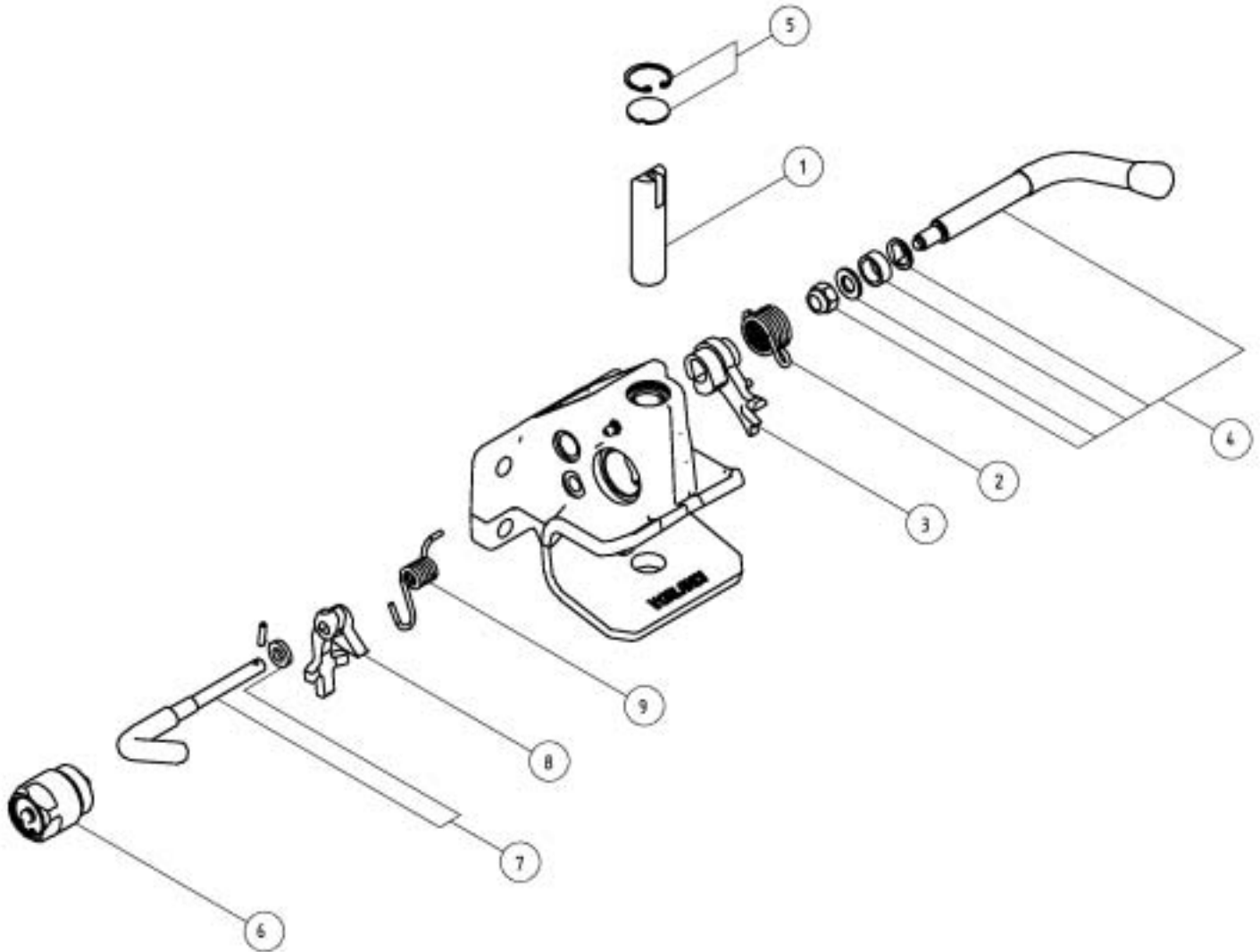
I modelli GA252 e GA253 non sono adatti per impiego su strada pubblica

The models GA252 and GA253 cannot be used on public roads

Die Modelle GA252 und GA253 sind nicht einsetzbar auf öffentlichen Straßen

Les modèles GA252 et GA253 ne sont pas aptes au service sur la route publique





POS.	Tutti i tipi All types Alle Typen Tous les types	Tipo - Type - Typ - Type			
		GA 250	GA 251	GA 252	GA 253
1		RG00388	RG00388	RG00399	RG00399
2	RG00389				
3	RG00390				
4	RG00391				
5	RG00392				
6		RG00382	RG00382		
7	RG00393				
8	RG00394				
9	RG00395				



# DE00700-701

Ganci a sfera  
Ball hitches  
Kupplungskugeln  
Rotules

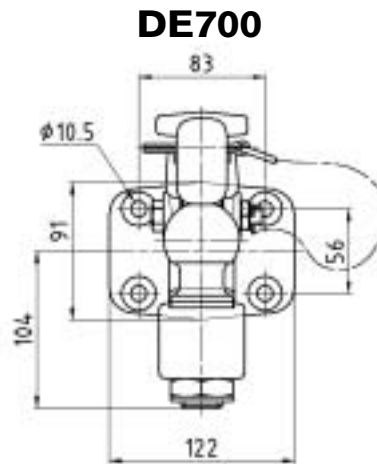
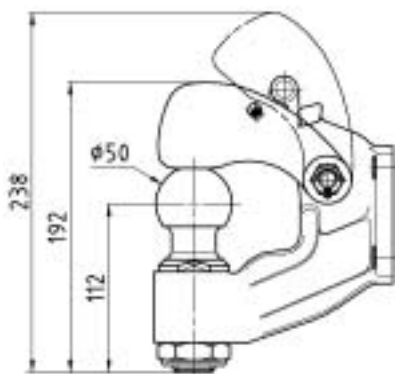
Per occhioni - For drawbar eyes  
Für Zugösen - Pour anneaux

**B 50** 94 / 20 / CE

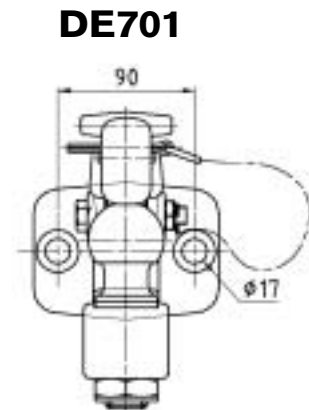
**ø 76 T** ECE - R55

## Dati tecnici - Technical data - Technische Daten - Données techniques

Tipo Type Typ Type	Versioni Versions Ausführungen Versions	Flangia Hole pattern Lochbild Entr'axe mm	Valore D D-Value D-Wert Valeur D kN	Valore Dc Dc-Value Dc-Wert Valeur Dc kN	Massa S S-Load S-Last Masse S kg	Peso Weight Gewicht Poids kg	94 / 20 / CE	
							Classe Class Klasse Classe	Omologazione Homologation Genehmigung Homologation
DE700	DE00700	83x56	31	31	340	2,2	S	e2 00 03043
DE701	DE00701	90	31	31	340	2,2	S	e2 00 03043



**DE700**



**DE701**

1990 228 A



# DE00702

Ganci a sfera  
Ball hitches  
Kupplungskugeln  
Rotules

Per occhioni - For drawbar eyes  
Für Zugösen - Pour anneaux

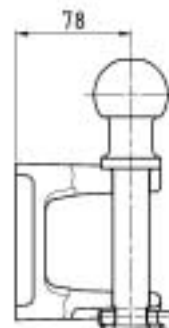
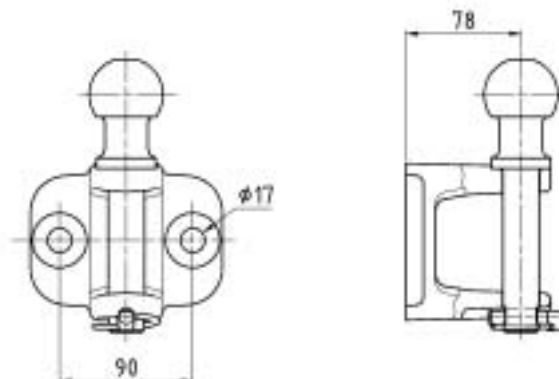
**B 50, ø 50** 94 / 20 / CE

**ø 40** DIN 74054

**ø 76 T** ECE - R55

## Dati tecnici - Technical data - Technische Daten - Données techniques

Tipo Type Typ Type	Versioni Versions Ausführungen Versions	Flangia Hole pattern Lochbild Entr'axe mm	Valore D/Dc sulla sfera D/Dc-Value on the ball D/Dc-Wert auf der Kugel Valeur D/Dc sur la rotule kN	Valore D/Dc sul gancio Dc-Value on the coupling Dc-Wert auf der Kupplung Valeur D/Dc sur le crochet kN	Massa S S-Load S-Last Masse S kg	Peso Weight Gewicht Poids kg	94 / 20 / CE	
							Classe Class Klasse Classe	Omologazione Homologation Genehmigung Homologation
DE702	DE00702	90	10,3	17,2	120	3,1	S	e2 00 03040





# DE00703

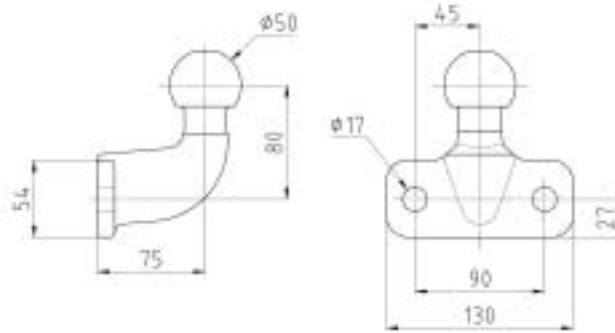
Ganci a sfera  
Ball hitches  
Kupplungskugeln  
Rotules

Per occhioni - For drawbar eyes  
Für Zugösen - Pour anneaux

**B 50** 94 / 20 / CE

## Dati tecnici - Technical data - Technische Daten - Données techniques

Tipo Type Typ	Versioni Versions Ausführungen Versions	Flangia Hole pattern Lochbild Entr'axe mm	Valore D D-Value D-Wert Valeur D kN	Valore Dc Dc-Value Dc-Wert Valeur Dc kN	Massa S S-Load S-Last Masse S kg	Peso Weight Gewicht Poids kg	94 / 20 / CE	
							Classe Class Klasse Classe	Omologazione Homologation Genehmigung Homologation
DE703	DE00703	90	17	17	120	2	A50-X	e2 00 03041



# DEDALO

Ganci a sfera  
Ball hitches  
Kupplungskugeln  
Rotules

Per occhioni - For drawbar eyes  
Für Zugösen - Pour anneaux

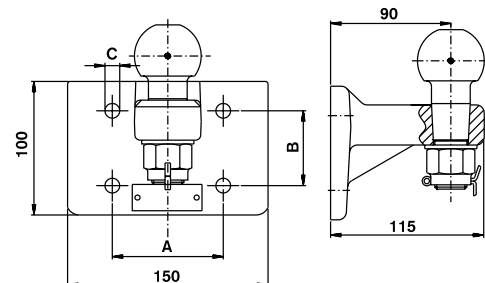
**B 50** 94 / 20 / CE

## Dati tecnici - Technical data - Technische Daten - Données techniques

Codice Article number Artikelnummer Numéro d'ordre	Flangia Hole pattern Lochbild Entr'axe mm	Peso rimorchiabile Total trailer weight Anhängelast Poids total de charge t	Carico statico Static load Statische Stützlast Chargé statique kg	Valore D D-Value D-Wert Valeur D kN	Peso Weight Gewicht Poids kg	Omologazione - Homologation Genehmigung - Homologation		
						ABG	CAT.	DMG
DE00100	83x56	3.5	120	21.5	3.5	M 4745	II	48279
DE00200	100x60	3.5	200		3.5		II	48279
DE00300	120x55	3.5	200		3.5		II	48279
DE00400	85x45	3.5	200		3.5		II	48279

Tipo Type Typ	Codice Article number Artikelnummer Numéro d'ordre	Flangia Hole pattern Lochbild Entr'axe mm	Peso rimorchiabile Total trailer weight Anhängelast Poids total de charge t	Carico statico Static load Statische Stützlast Chargé statique kg	Valore D D-Value D-Wert Valeur D kN	Peso Weight Gewicht Poids kg	Omologazione - Homologation Genehmigung - Homologation
							94/20/CE
GS 500	DE00500	83x56	3.5	250	22.5	3.5	e11 00 - 0533
GS 501	DE00600	120x55	3.5	330	28	3.5	e3 00 - 1541

Tipo - Type Typ - Type	A (mm)	B (mm)	C (mm)
DE00100	83	56	11
DE00200	100	60	15
DE00300	120	55	15
DE00400	85	45	15
GS 500	83	56	11
GS 501	120	55	15





# UN 76

Ganci ad uncino  
Pintle hooks  
Hakenkupplungen  
Crochets d'attelage

Per occhioni - For drawbar eyes  
Für Zugösen - Pour anneaux

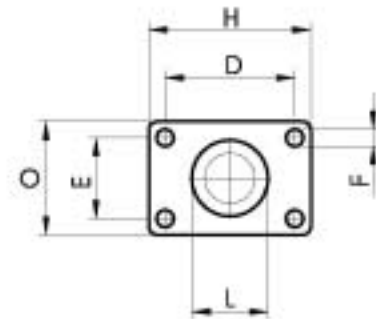
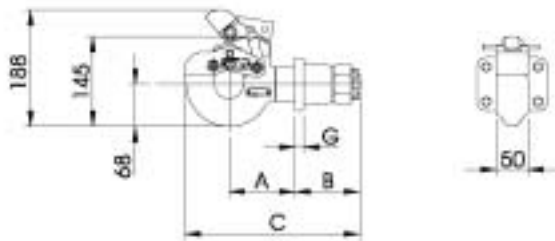
**76 T**

ECE - R55

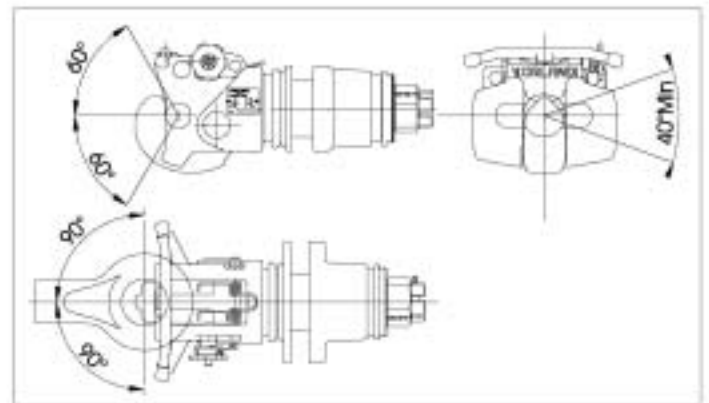
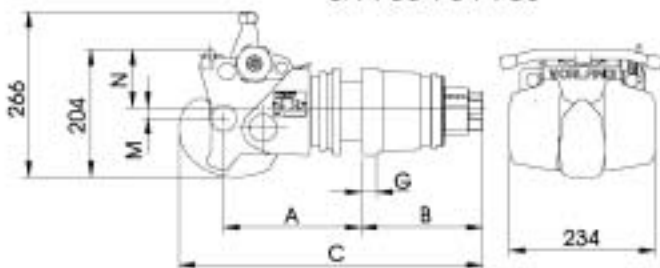
## Dati tecnici - Technical data - Technische Daten - Données techniques

Tipo Type Typ	Codice Article number Artikelnummer Numéro d'ordre	Flangia Hole pattern Lochbild Entr'axe mm	Valore D D-Value D-Wert Valeur D kN	Valore Dc Dc-Value Dc-Wert Valeur Dc kN	Massa S S-Load S-Last Masse S kg	Valore V V-Value V-Wert Valeur V kN	Peso Weight Gewicht Poids kg	94 / 20 / CE	
								Classe Class Klasse Classe	Omologazione Homologation Genehmigung Homologation
UN 761	UN76100	83x56	27	21	350	15	8	K3	E3-3005
UN 763	UN76300	120x55	70	54	700	18	37	KA1	E3-3004
UN 764	UN76400	140x80	100	70	900	25	37	KA2	E3-3003
UN 766	UN76600	160x100	190	103	1500	50	46	KA3	E3-3002

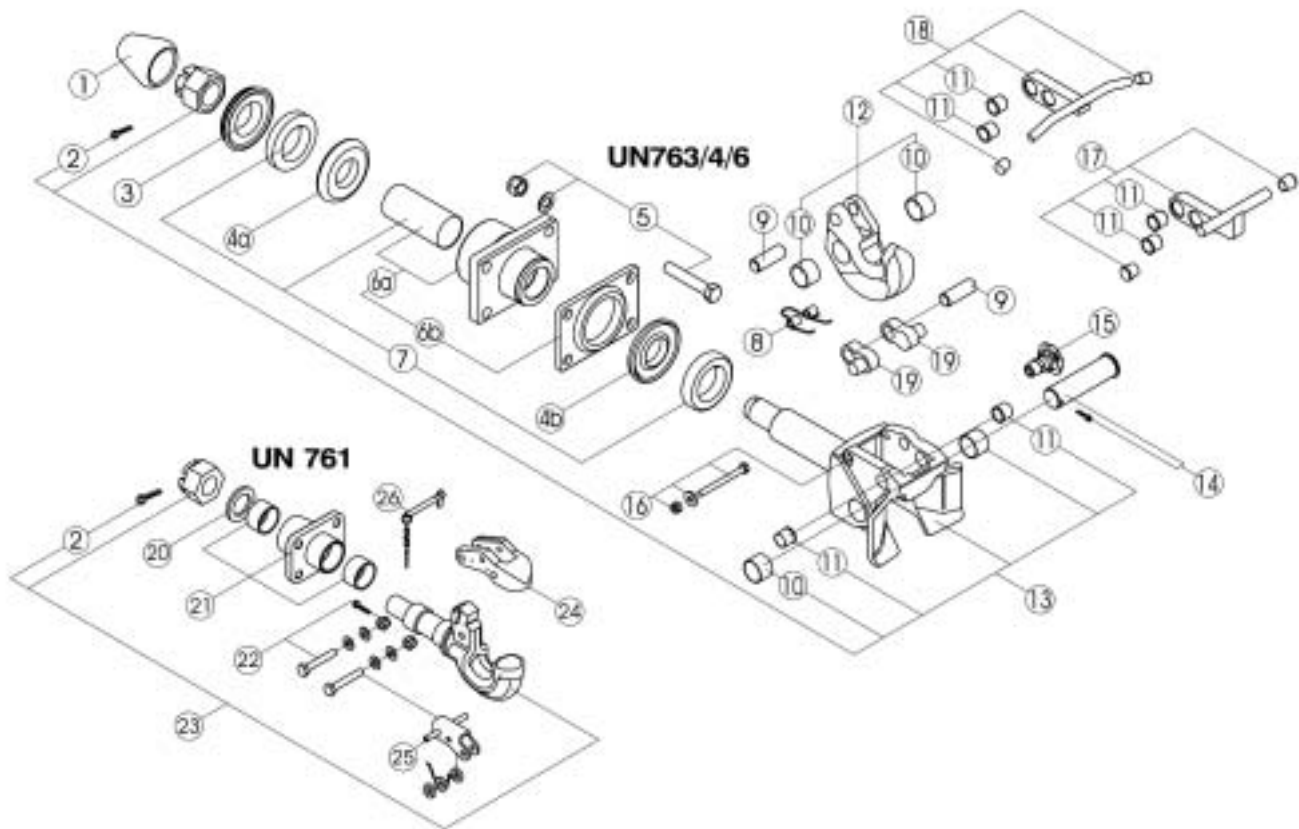
UN 761



UN 763-764-766



Tipo - Type Typ - Type	A (mm)	B (mm)	C (mm)	D (mm)	E (mm)	F (mm)	G (mm)	H (mm)	L (mm)	M (mm)	N (mm)	O (mm)
UN 761	106	104	281	83	56	12,5	14	112,5	65	--	--	86
UN 763	200	156	450	120	55	15	20	155	73,90	16	95	90
UN 764	200	156	450	140	80	17	20	180	83,90	16	95	120
UN 766	215	212	471,5	160	100	21	25	200	93,90	16	95	140



POS.	Tutti i tipi All types Alle Typen Tous les types	Tipo - Type - Typ - Type			
		UN 763 00A	UN 764 00A	UN 766 00A	UN 761 00A
1	RG00034				
2	RG00064				RG000369
3		RG00076	RG00175	RG00175	
4a		RG00216	RG00189		
4b		RG00216	RG00189	RG00173	
5		RG00130	RG00131	RG00132	
6a		RG00182	RG00195	RG00352	
6b				RG00222	
7		RG00217	RG00183	RG00184	
8	RG00339				
9	RG00331				
10	RG00332				
11	RG00333				
12	RG00341				
13		RG00342	RG00342	RG00343	
14	RG00334				
15	RG00335				
16	RG00336				
17(*)	RG00344				
18	RG00345				
19	RG00337				
20					RG00011
21					RG00346
22					RG00347
23					RG00348
24					RG00349
25					RG00350
26					RG00351

(\*) In produzione fino al 2002  
In production till 2002  
In Produktion bis 2002  
En production jusq' en 2002





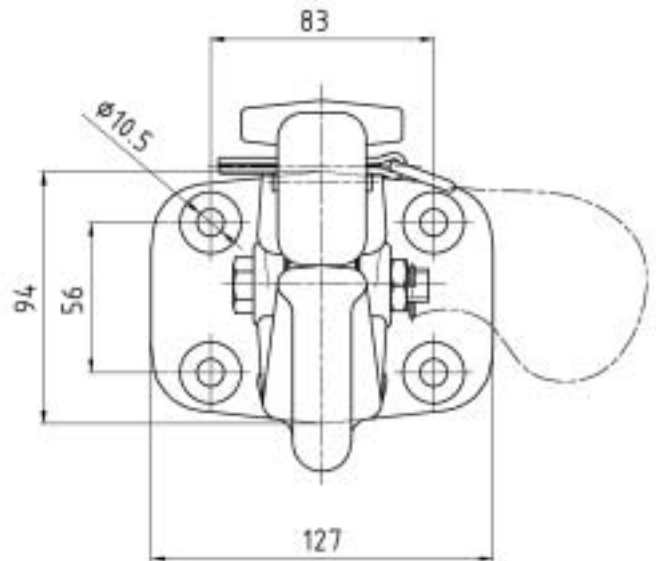
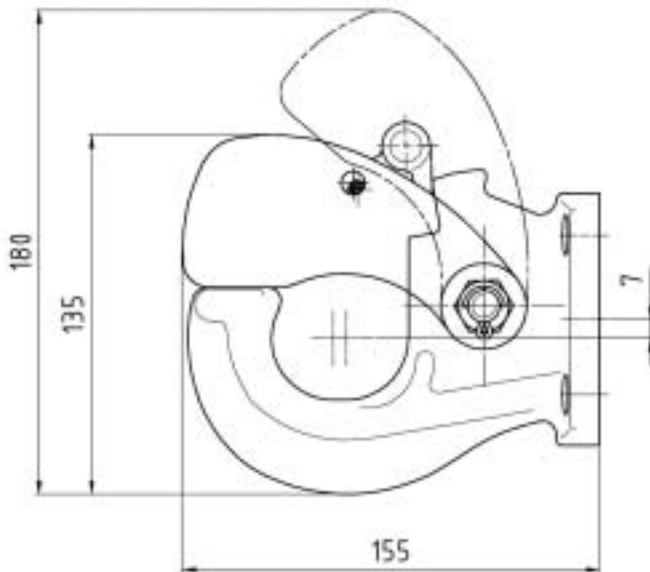
# UN 45

Ganci ad uncino  
Pintle hooks  
Hakenkupplungen  
Crochets fixes

Per occhioni - For drawbar eyes Für Zugösen - Pour anneaux	<b>ø 76 T</b>	ECE - R55
	<b>ø 45 T</b>	CUNA NC 138-4

## Dati tecnici - Technical data - Technische Daten - Données techniques

Tipo Type Typ Type	Codice Article number Artikelnummer Numéro d'ordre	Flangia Hole pattern Lochbild Entr'axe mm	Valore D D-Value D-Wert Valeur D kN	Valore Dc Dc-Value Dc-Wert Valeur Dc kN	Massa S S-Load S-Last Masse S kg	Peso Weight Gewicht Poids kg	94 / 20 / CE	
							Classe Class Klasse Classe	Omologazione Homologation Genehmigung Homologation
UN 450	UN45000	83x56	31	31	340	3,8	S	e2 00 03042



1990 069 C

# ULPYO

Ganci ad uncino  
Pintle hooks  
Hakenkupplungen  
Crochets fixes



Per occhielli - For drawbar eyes  
Für Zugösen - Pour anneaux

ø 76 T

ECE - R55

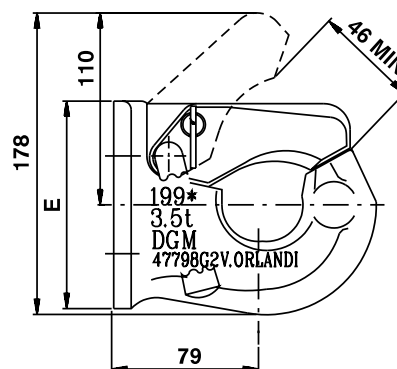
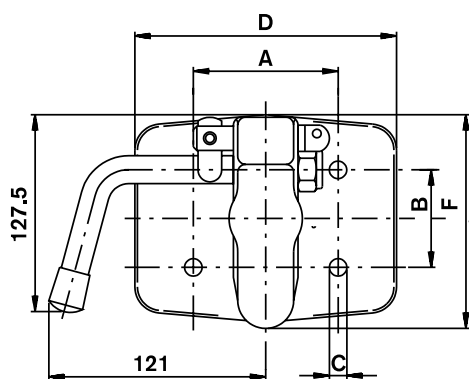
ø 45 T

CUNA NC 138-4

## Dati tecnici - Technical data - Technische Daten - Données techniques

Codice Article number Artikelnummer Numéro d'ordre	Flangia Hole pattern Lochbild Entr'axe mm	Peso rimorchiabile Total trailer weight Anhängelast Poids total de charge t	Carico statico Static load Statische Stützlast Chargé statique kg	Peso Weight Gewicht Poids kg	CUNA NC 138-40	
					CAT.	DGM
UN00100	83x56	3.5	200	5.5	II	47798
UN00200	68x70	3.5	200	5.5	II	47798
UN00300	100x60	3.5	200	5.5	II	47798
UN00400	120x55	3.5	200	5.5	II	47798
UN00500	85x45	3.5	200	5.5	II	47798

Tipo - Type Typ - Type	A (mm)	B (mm)	C (mm)	D (mm)	E (mm)	F (mm)
UN00100	83	56	11	150	119	122.5
UN00200	68	70	13	100	106	121
UN00300	100	60	15	150	119	122.5
UN00400	120	55	15	150	119	122.5
UN00500	85	45	15	150	119	122.5



1990 069 C

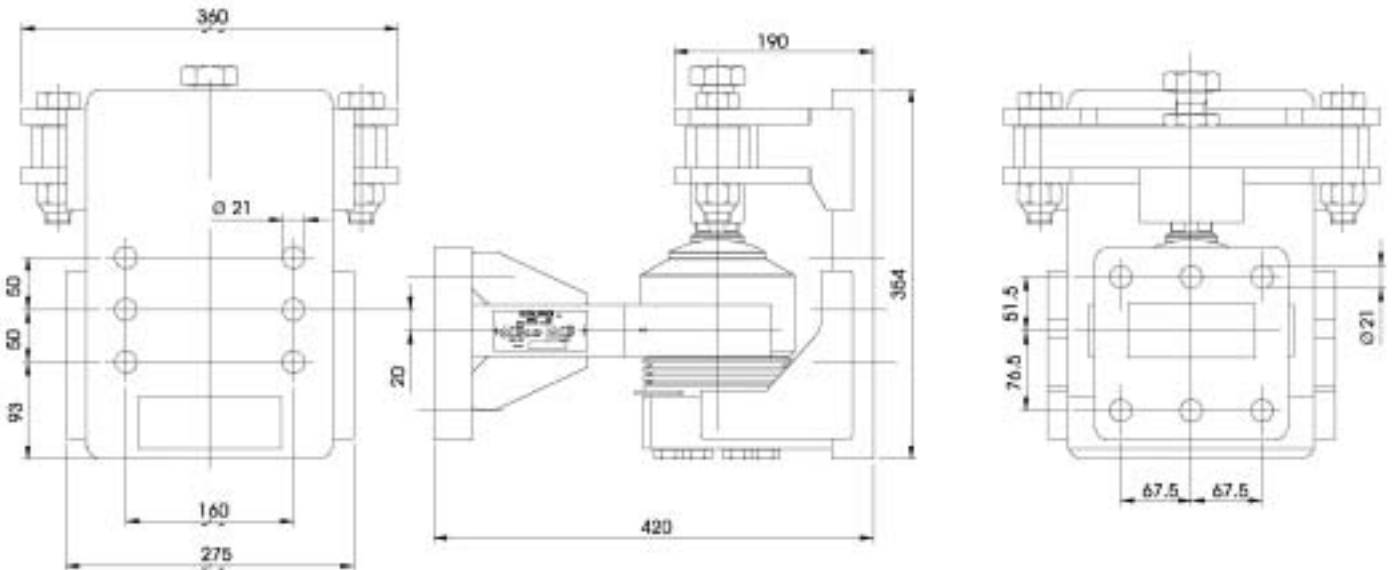


# GS 900

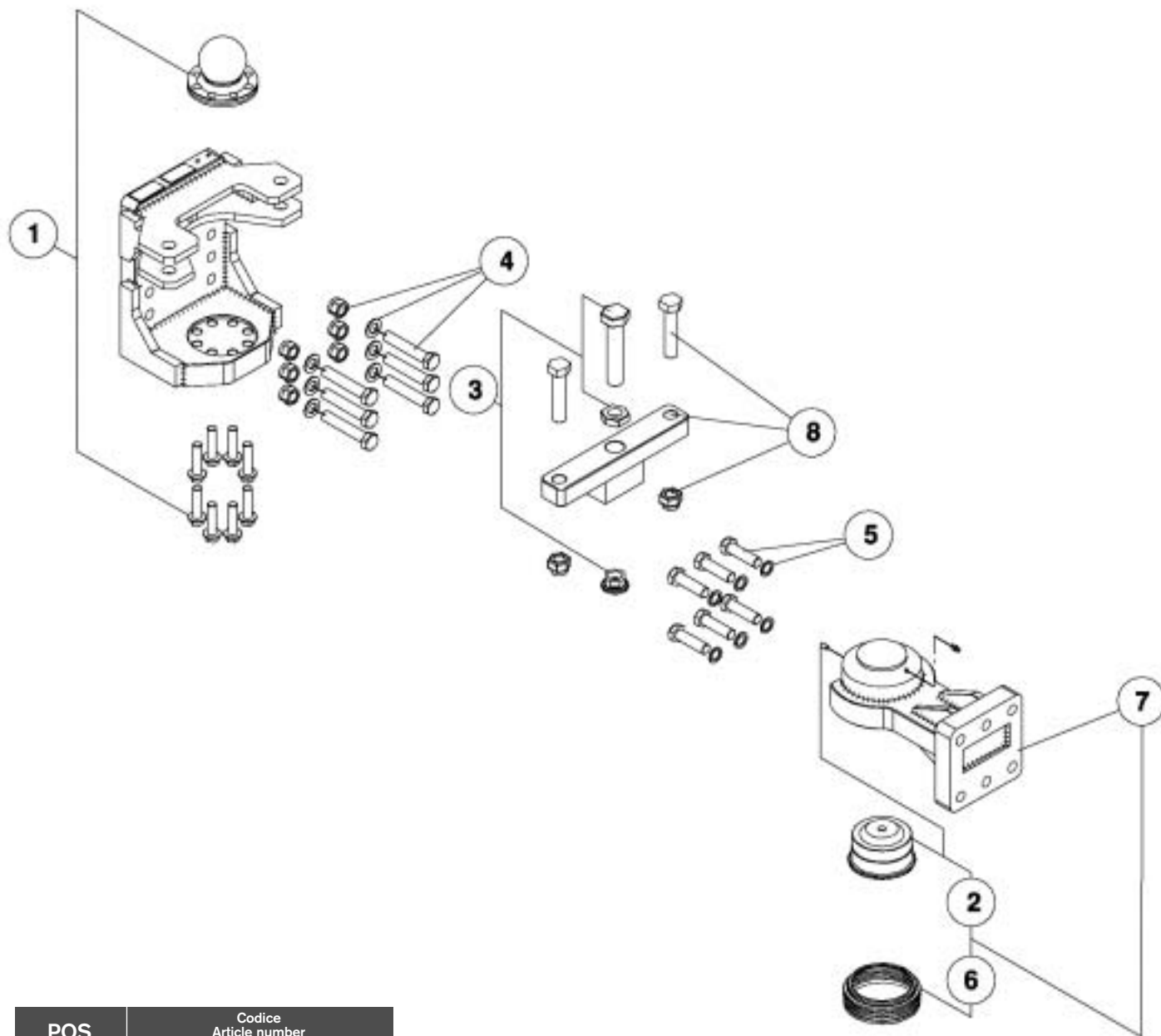
Gancio trasporto vetture  
 Car transporter drawbar coupling  
 Autotransporterkupplung  
 Crochet d'attelage pour transport véhicules

## Dati tecnici - Technical data - Technische Daten - Données techniques

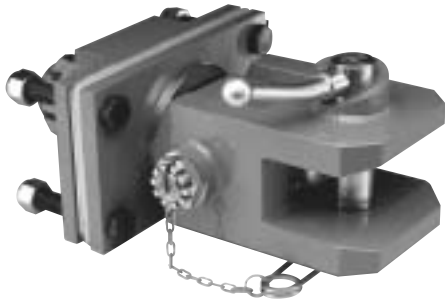
Tipo Type Typ Type	Codice Article number Artikelnummer Numéro d'ordre	94 / 20 / CE						ECE-R55					
		Valore Dc Dc-Value Dc-Wert Valeur Dc kN	Valore V V-Value V-Wert Valeur V kN	Valore S S-Value S-Wert Valeur S kg	Peso Weight Gewicht Poids Kg	Classe Class Klasse Classe	Omologazione Homologation Genehmigung Homologation	Valore Dc Dc-Value Dc-Wert Valeur Dc kN	Valore V V-Value V-Wert Valeur V kN	Valore S S-Value S-Wert Valeur S kg	Peso Weight Gewicht Poids Kg	Classe Class Klasse Classe	Omologazione Homologation Genehmigung Homologation
GS 900	GS900000	120	90	1000	90	S	e11 00 - 4172	140	90	1000	90	T	E11-01 3791



1990 223 A



POS.	Codice Article number Artikelnummer Numéro d'ordre
1	RG00322
2	RG00323
3	RG00324
4	RG00325
5	RG00326
6	RG00327
7	RG00328
8	RG00330



# TITANO

Gancio per traini eccezionali  
 Trailer coupling for heavy weight transport  
 Anhängerkupplung für Schwertransport  
 Crochet d'attelage pour transport lourd

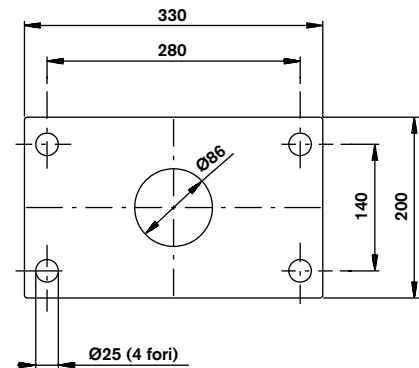
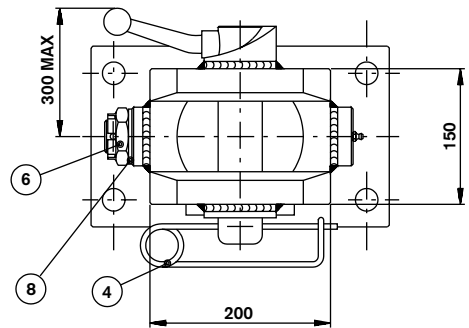
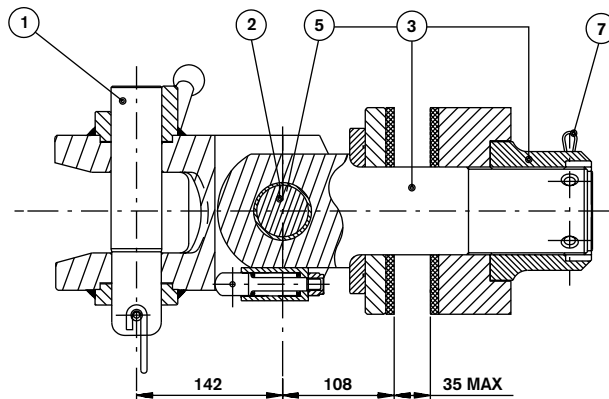
Per occhioli - For drawbar eyes  
 Für Zugösen - Pour anneaux

Ø 50

CUNA NC 438-55

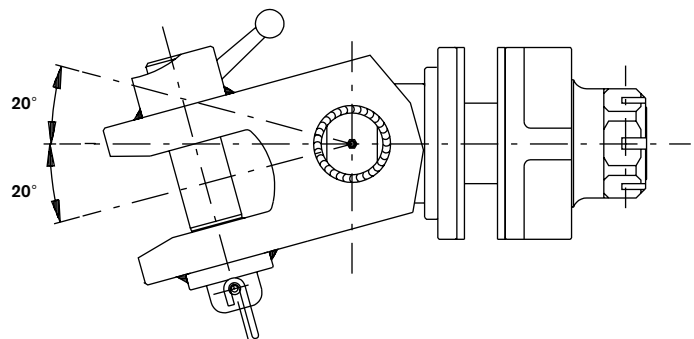
## Dati tecnici - Technical data - Technische Daten - Données techniques

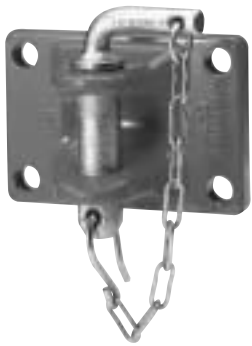
Codice Article number Artikelnummer Numéro d'ordre	Flangia Hole pattern Lochbild Entr'axe mm	Peso rimorchiabile Total trailer weight Anhängelast Poids total de charge t	Peso Weight Gewicht Poids kg	CAT.	DGM
TI00100	280x140	250	110	VII	48876



## Ricambi - Spare parts Ersatzteile - Pieces de rechange

Pos.	Codice Article number Artikelnummer Numéro d'ordre
1	RG00017
2	RG00032
3	RG00033
4	RG00052
5	RG00121
6	RG00062
7	RG00065
8	RG00067





# GM 10

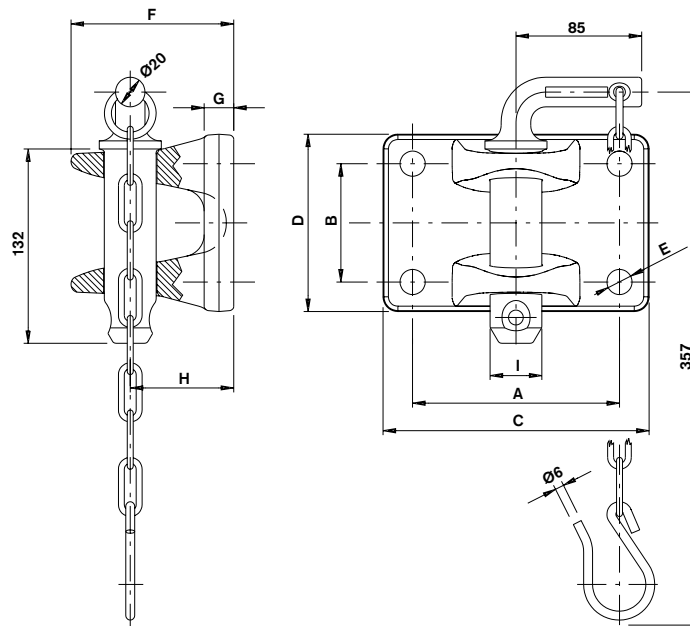
**Ganci di manovra**  
**Towing couplings**  
**Abschleppkupplungen**  
**Attelages de dépannage**

Per occhioni - For drawbar eyes  
 Für Zugösen - Pour anneaux

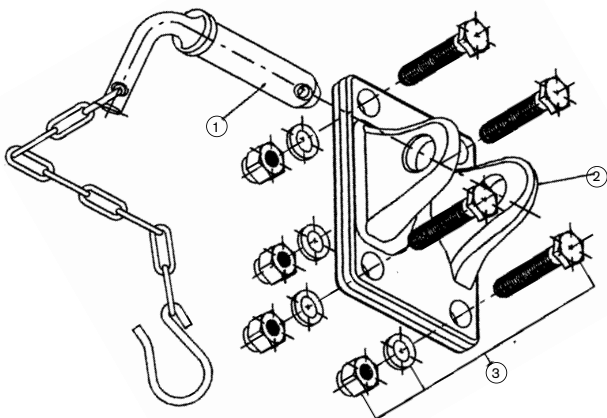
ø 50	94 / 20 / CE
ø 40	DIN 74054
ø 76 T	ECE - R55

## Dati tecnici - Technical data - Technische Daten - Données techniques

Tipo Type Typ Type	Codice Article number Artikelnummer Numéro d'ordre	Peso rimorchiabile Total trailer weight Anhängelast Poids total de charge t	Peso motrice Total weight of towing vehicle Gewicht des Zugfahrzeuges Poids véhicule trainant t	Peso Weight Gewicht Poids kg
GM103	GM10300	25	50	4.2
GM104	GM10400	35	70	6
GM105	GM10500	50	120	7



Tipo - Type Typ - Type	A (mm)	B (mm)	C (mm)	D (mm)	E (mm)	F (mm)	G (mm)	H (mm)	I (mm)
GM103	120	55	155	90	ø15	102	15	70	ø35
GM104	140	80	180	120	ø17	110	20	70	ø35
GM105	160	100	200	140	ø21	110	20	70	ø35



### Ricambi - Spare parts Ersatzteile - Pieces de rechange

	GM 103	GM 104	GM 105
Pos. 1	RG00219	RG00219	RG00219
Pos. 3	RG00130	RG00131	RG00132

Tutti i ganci di manovra sono forniti senza targhetta di omologazione. Dimensioni principali e capacità di traino in accordo con le direttive 1999/58/CE e 96/64/CE.

Alle Anhängerkupplungen werden ohne Typenschild geliefert. Die wesentlichen Maße und Anhängelasten entsprechen den Direktiven 1999/58/CE und 96/64/CE.

All towing couplings are delivered without a type plate. Main dimensions and towing capacity in compliance with directives 1999/58/CE and 96/64/CE.

Tous les attelages sont livrés sans plaque d'identification. Les dimensions principales et capacités de traction sont en accord avec les directives 1999/58/CE et 96/64/CE.