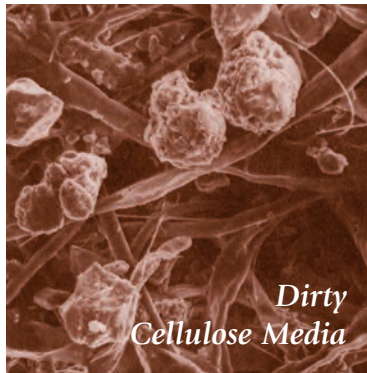


Clean  
Cellulose Media

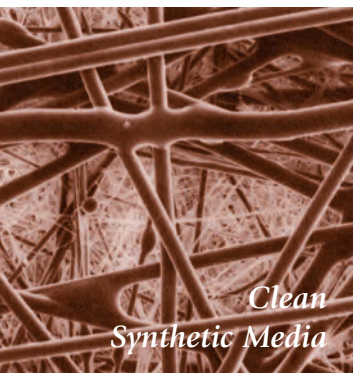


Dirty  
Cellulose Media

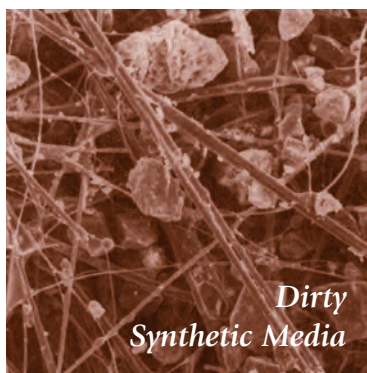
## Clean fluid is essential

Improving system fluid cleanliness levels, providing better cold start performance and meeting service interval expectations are the primary objectives in the design of Baldwin hydraulic filters. To accomplish these goals, Baldwin Filters utilizes multiple types of filtration media:

- **Cellulose Media** — The original and most common media is made of natural fibers. These twisted fibers are larger and more irregular than synthetic fibers – creating more resistance to flow or pressure drop.
- **Synthetic Media** — These man-made glass fibers are very uniform in size and shape – creating the least possible resistance to flow and providing improved efficiency to protect sensitive controls.
- **Blended Media** — A blend of cellulose and synthetic fibers provides improved efficiency, along with increased dirt-holding capacity.



Clean  
Synthetic Media



Dirty  
Synthetic Media

## Depend on Baldwin Filters

Protect your equipment with heavy-duty Baldwin filters. When it comes to coverage, Baldwin Filters provides the widest range of heavy-duty lube, air, fuel, coolant, hydraulic and transmission filters in the industry.

Baldwin consistently manufactures filters designed to meet or exceed the quality, performance and supply requirements of original equipment and aftermarket customers.

*Africa*  
**Baldwin Filters South Africa**  
Ph: 27-21-534-0029  
Fax: 27-21-534-3730  
E-mail: africa@baldwinfilter.com

*Australia & New Zealand*  
**Baldwin Filters Aust., Pty. Ltd.**  
Ph: 61-3-9353-7300  
Fax: 61-3-9353-7301  
E-mail: australia-newzealand@baldwinfilter.com

*Central & South America*  
**Baldwin Filters**  
Ph: (308) 233-9220  
Fax: (308) 233-9769  
E-mail: latinamerica@baldwinfilter.com

*China*  
**Baldwin Filters**  
Ph: 852 2814 7722  
Fax: 852 2814 7744  
E-mail: china@baldwinfilter.com

*Europe*  
**Baldwin Filters N.V.**  
Ph: 32 3 328 18 88  
Fax: 32 3 328 18 99  
E-mail: europe@baldwinfilter.com

*Mexico*  
**Filtros Baldwin de Mexico, S.A. de C.V.**  
Ph: 52-442-227-3400  
Fax: 52-442-227-3427  
E-mail: mexico@baldwinfilter.com

*Middle East*  
**Baldwin Filters**  
Ph: (308) 237-9782  
Fax: (308) 237-9769  
E-mail: middleeast@baldwinfilter.com

*Morocco*  
**Baldwin Filters**  
Ph: (212) 22 70 00 25  
Fax: (212) 22 70 00 28  
E-mail: morocco@baldwinfilter.com

*Russia*  
**Baldwin Filters**  
Ph: (308) 237-9749  
Fax: (308) 237-9769  
E-mail: russia@baldwinfilter.com

*Southeast Asia & Pacific Rim*  
**Baldwin Filters**  
Ph: 65-6382-6619  
Fax: 65-6382-6182  
E-mail: southeastasia@baldwinfilter.com

*UK & Ireland*  
**Baldwin Filters Ltd.**  
Ph: 44-1702-291668  
Fax: 44-1702-290846  
E-mail: uk-ireland@baldwinfilter.com



a CLARCOR company

# Hydraulic System protection



**BALDWIN FILTERS** 

a CLARCOR company

TS 16949  
ISO 9001



QUALITY SYSTEM  
CERTIFIED

4400 East Highway 30 ■ P.O. Box 6010  
Kearney, Nebraska 68848-6010  
Phone: (308) 234-1951 ■ Toll Free: (800) 822-5394  
Fax: (800) 828-4453 ■ Int'l Fax: (308) 237-9769  
Internet: www.baldwinfilter.com



## Heavy-duty protection

As hydraulic systems are becoming more sophisticated, the hydraulic filter has become a critical component. With the need for closer tolerances, faster cycle times, higher pressures and extended service intervals, more demand is being placed on the hydraulic filter.

Proper filtration starts with selecting the right filter based on the original equipment manufacturer's recommendations, which include:

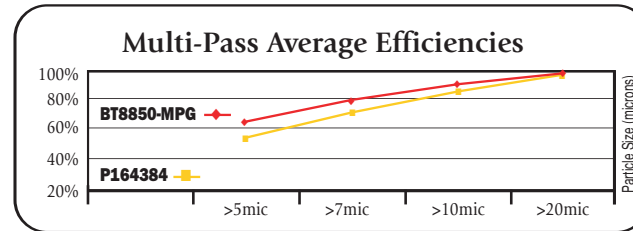
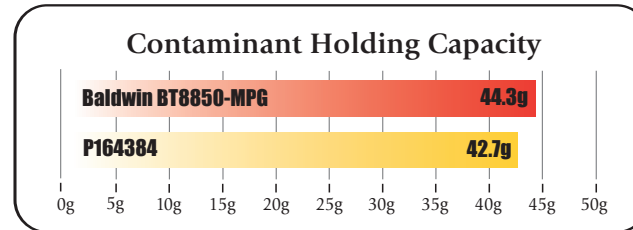
- The type of fluid used and the system operating pressure.
- The amount of fluid flow required for system operation.
- The amount of restriction (resistance to fluid flow) caused by the filter.
- The amount of contaminant the filter needs to be able to trap and hold in order to meet service interval expectations.
- The level of filtration (fluid cleanliness level) required by the specific application.

In addition to these factors, Baldwin takes into account that hydraulic systems are using more filters than ever. Increased sophistication and the use of sensitive, close-tolerance components often require strategic location of several filters instead of just one. Baldwin offers more than 850 hydraulic filters to meet these needs.

## Maximum performance

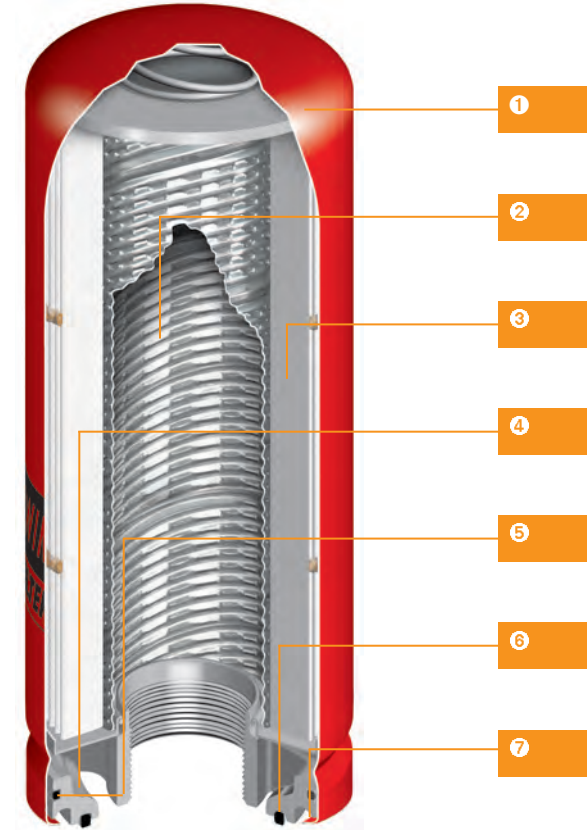
Baldwin filters are manufactured to meet or exceed original equipment specifications established by equipment manufacturers.

ISO 16889 tests show Baldwin Filters exceeds the standards for contaminant removal efficiency and contaminant holding capacity. The following product comparisons illustrate Baldwin's superior performance.



ISO 16889 Test: Flow Rate 20 gpm, ISO Medium Test Dust, Termination at 25 psid.

## Medium Pressure Hydraulic



- 1 **Heavy-Duty, All-Metal Housing** is built to handle the stress and punishment of sophisticated, modern hydraulic systems.
- 2 **Spiral Seamed Centertube** provides increased structural integrity to optimize media effectiveness.
- 3 **High Efficiency Media**, either synthetic or cellulose, is designed to meet or exceed the requirements of each particular system.
- 4 **Heavy-Duty Baseplate** is constructed of aluminum, offering the strength and durability necessary for 500+ psi hydraulic systems.
- 5 **Integral Housing Seal** prevents leakage and absorbs shock loads on the canister.
- 6 **Heavy-Duty O-Ring Gasket** provides a large sealing surface and rotates freely in its groove. Requires only 1/2 turn after gasket contact for easier installation.
- 7 **L-Lock Hem** joins the canister and baseplate to protect against high-pressure surges and vibration.

